

APP CRS	Rwy Idg	<b>3398</b>
<b>033°</b>	TDZE	<b>2026</b>
	Apt Elev	<b>2032</b>

# RNAV (GPS) RWY 3

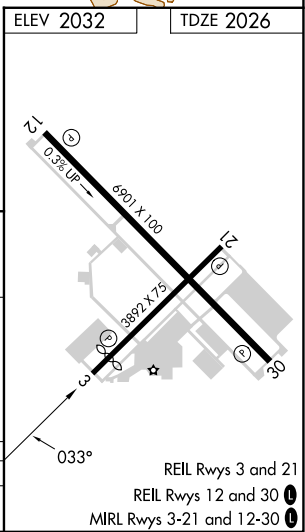
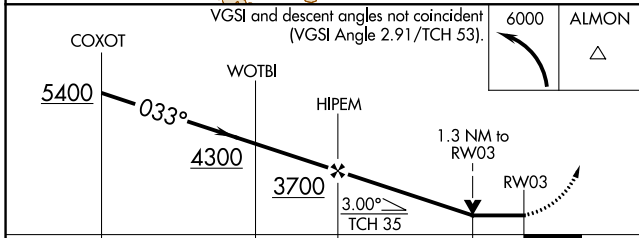
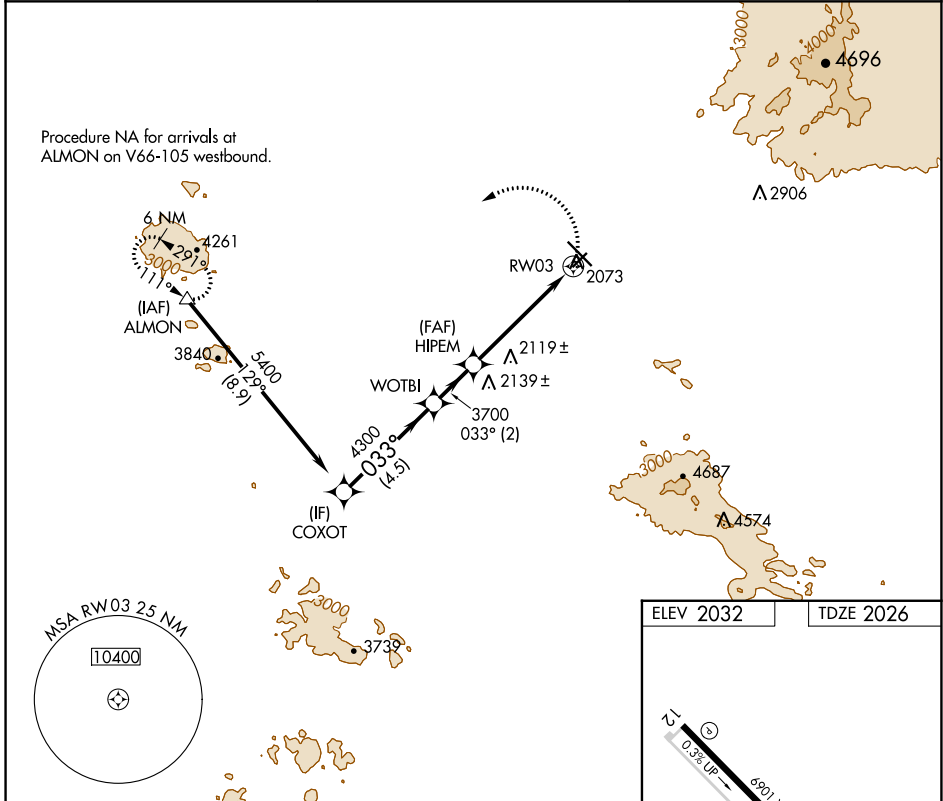
MARANA RGNL (AVQ)

RNP APCH.

▼ VDP NA when using Ryan Fld altimeter setting. Rwy 3 helicopter visibility reduction below 3/4 SM NA. When local altimeter setting not received, use Ryan Field altimeter setting and increase all MDAs 100 feet and LNAV Cat C visibility 1/4 SM.

MISSED APPROACH: Climbing left turn to 6000 direct ALMON and hold, continue climb-in-hold to 6000.

AWOS-3 <b>118.375</b>	TUCSON APP CON <b>119.4 318.1</b>	UNICOM <b>123.0 (CTAF) 0</b>
--------------------------	--------------------------------------	---------------------------------



CATEGORY	A	B	C	D
LNAV MDA	2480-1	454 (500-1)	2480-1 3/8 454 (500-1 3/8)	NA

SW-4, 28 NOV 2024 to 26 DEC 2024

SW-4, 28 NOV 2024 to 26 DEC 2024