

WAAS CH 78341 W16A	APP CRS 159°	Rwy Idg 3102 TDZE 541 Apt Elev 541
--	------------------------	---

RNAV (GPS) RWY 16

HOBBY FLD (77S)

RNP APCH.

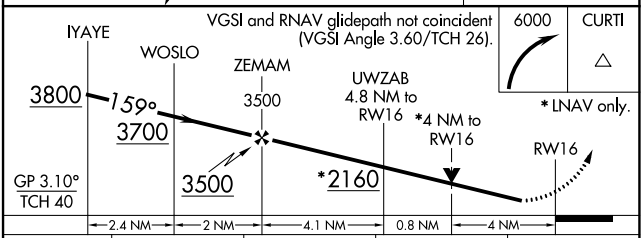
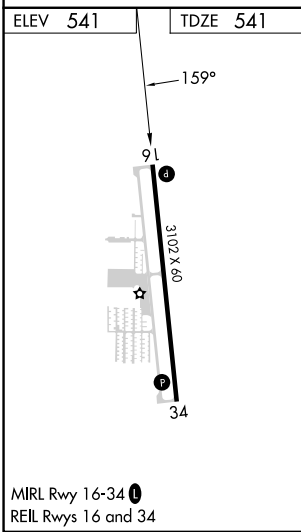
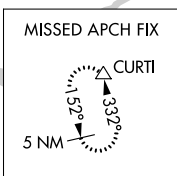
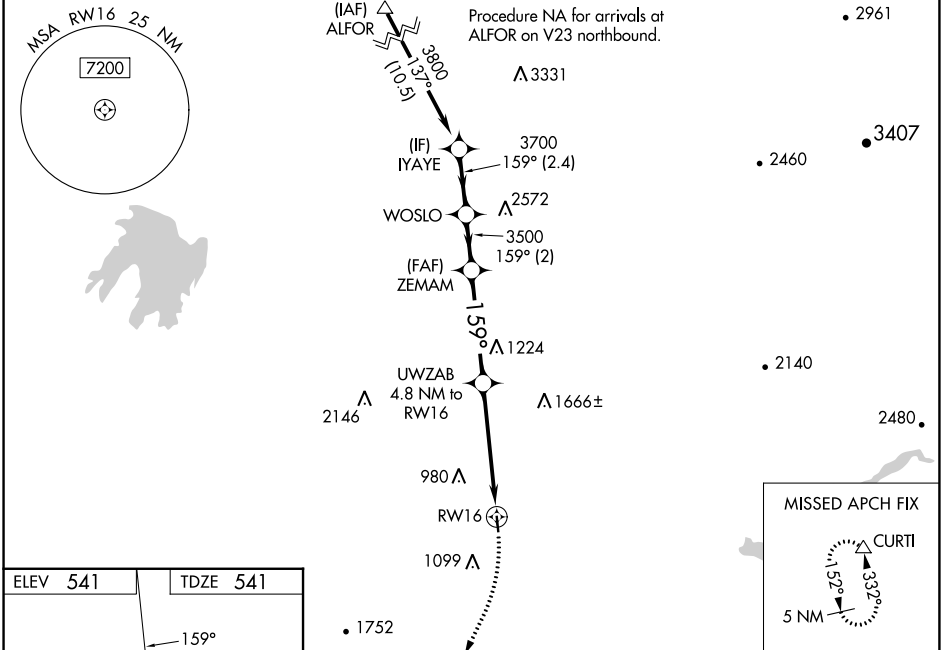
⚠ NA For uncompensated Baro-VNAV systems, LNAV/VNAV NA below -16°C or above 54°C. Circling Rwy 34 NA at night. When local altimeter setting not received, use Eugene altimeter setting and increase LPV DA to 1102 feet and all LPV visibilities ¼ SM, and increase LNAV/VNAV DA to 1474; increase all MDAs 80 feet. Baro-VNAV and VDP NA when using Eugene altimeter setting. Rwy 16 helicopter visibility reduction below ¾ SM NA.

MISSED APPROACH: Climbing right turn to 6000 direct CURTI and hold, continue climb-in-hold to 6000.

AWOS-3
119.275

CASCADE APP CON *
119.6

UNICOM
122.7 (CTAF) 0



CATEGORY	A	B	C	D
LPV DA	1041-1⅜ 500 (500-1⅝)			
LNAV/VNAV DA	1413-2½ 872 (900-2½)			
LNAV MDA	1820-1¼ 1279 (1300-1¼)	1820-1½ 1279 (1300-1½)	1820-3 1279 (1300-3)	2740-3
C CIRCLING	1820-1¼ 1279 (1300-1¼)	1820-1½ 1279 (1300-1½)	2260-3 1719 (1800-3)	2740-3 2199 (2200-3)

NW-1, 28 NOV 2024 to 26 DEC 2024

NW-1, 28 NOV 2024 to 26 DEC 2024