

WAAS CH <b>40308</b> <b>W16A</b>	APP CRS <b>156°</b>	Rwy Idg TDZE Apt Elev	<b>3998</b> <b>686</b> <b>686</b>
--	------------------------	-----------------------------	---

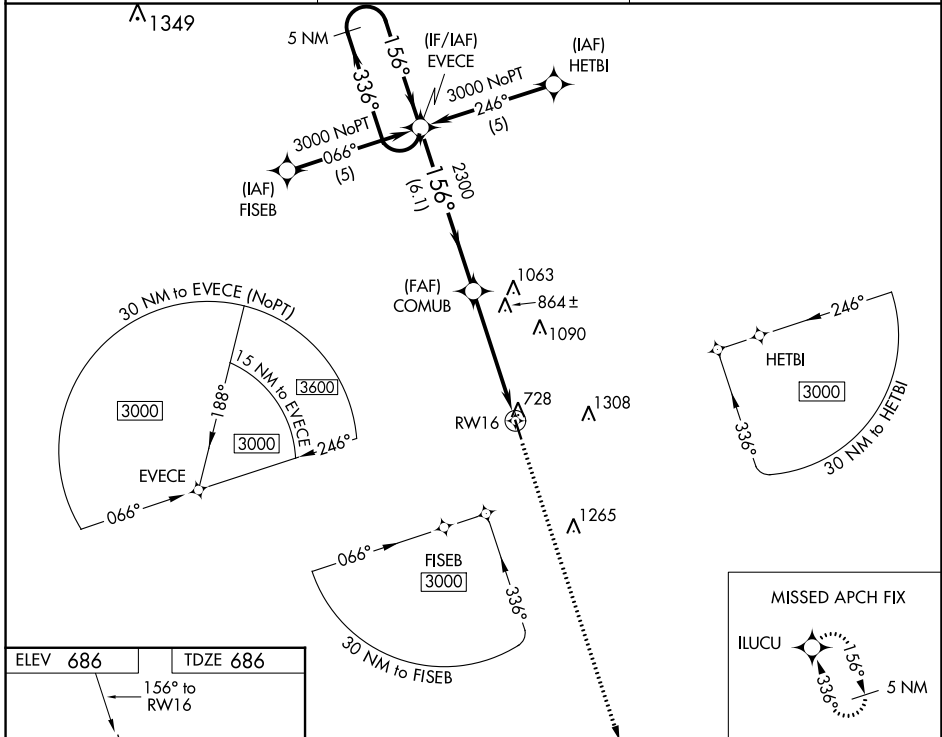
# RNAV (GPS) RWY 16

HILLSBORO MUNI (INJ)

**⚠** Baro-VNAV NA when using Cleburne Rgnl altimeter setting. DME/DME RNP-0.3 NA. For uncompensated Baro-VNAV systems, LNAV/VNAV NA below -16°C (4°F) or above 54°C (130°F). Visibility reduction by helicopters NA. When local altimeter setting not received use Cleburne Rgnl altimeter setting and increase all DA/MDA 80 feet, increase LPV and LNAV/VNAV visibility 1/2 mile all Cats.

**MISSED APPROACH:** Climb to 3000 direct ILUCU and hold.

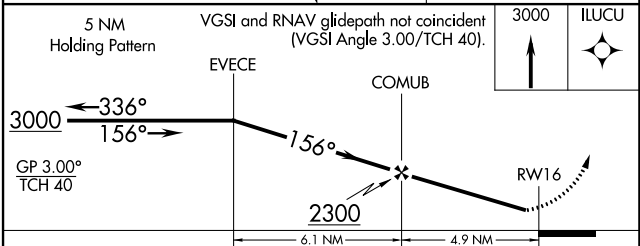
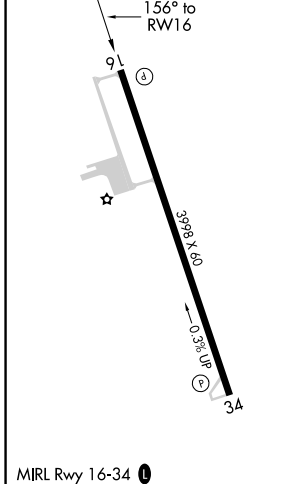
AWOS-3PT <b>118.725</b>	WACO APP CON ★ <b>127.65 352.0</b>	CTAF <b>122.90</b>
----------------------------	---------------------------------------	-----------------------



SC-2, 28 NOV 2024 to 26 DEC 2024

SC-2, 28 NOV 2024 to 26 DEC 2024

ELEV <b>686</b>	TDZE <b>686</b>
-----------------	-----------------



CATEGORY	A	B	C	D
LPV DA	936-1	250 (300-1)		NA
LNAV/VNAV DA	1128-1 1/2	442 (500-1 1/2)		NA
LNAV MDA	1120-1	434 (500-1)		NA
CIRCLING	1180-1	1200-1		NA
	494 (500-1)	514 (600-1)		