

APP CRS 017°	Rwy Idg 4500
	TDZE 2087
	Apt Elev 2092

RNAV (GPS) RWY 2

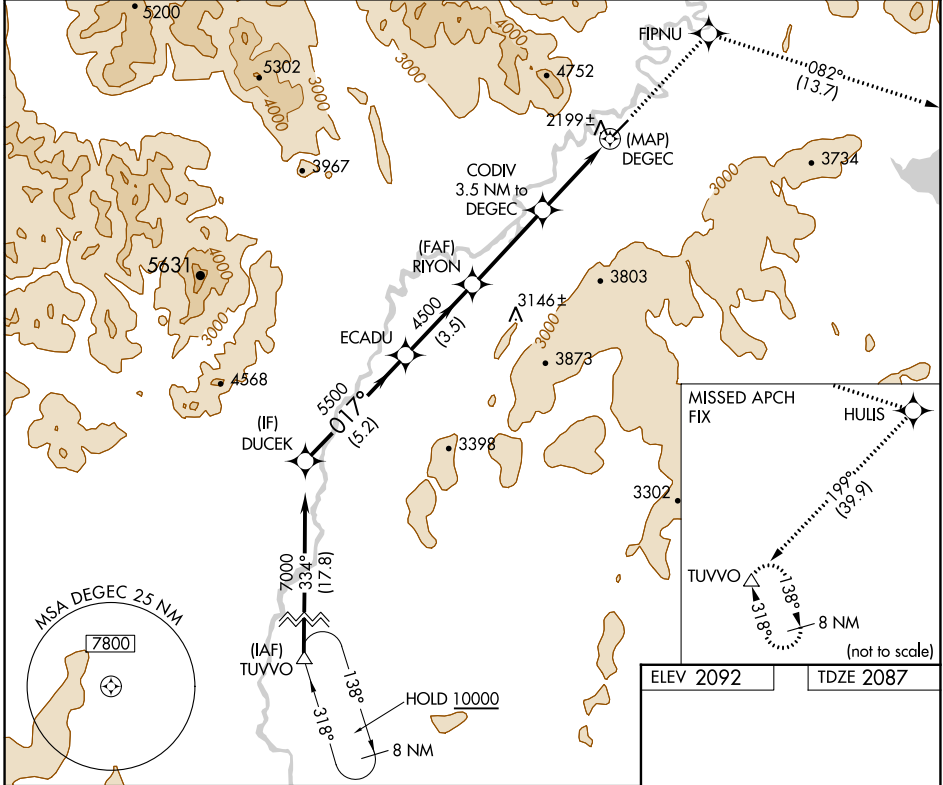
ARCTIC VILLAGE (ARC)(PARC)

33 -37°C

DME/DME RNP-0.3 NA.
If local altimeter setting not received, procedure NA.

MISSED APPROACH: Climb to 10000 direct FIPNU and via 082° track to HULIS and right turn via 199° track to TUVVO and hold.

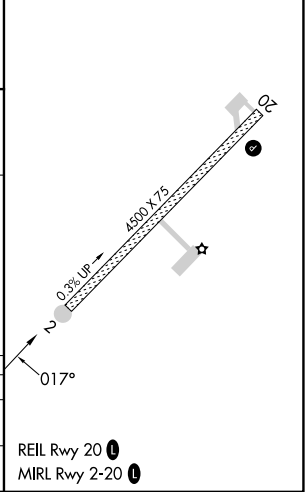
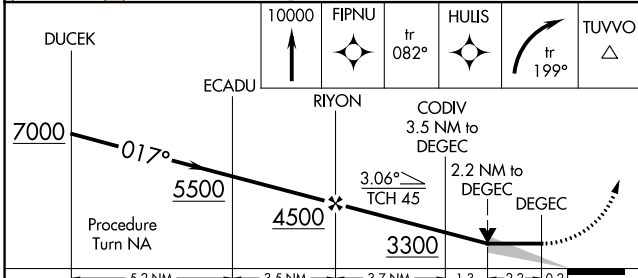
AWOS-3P 135.75	ANCHORAGE CENTER 135.0 225.4	FAIRBANKS RADIO 122.05	CTAF 122.9
--------------------------	--	----------------------------------	----------------------



AK, 31 OCT 2024 to 26 DEC 2024

AK, 31 OCT 2024 to 26 DEC 2024

ELEV 2092	TDZE 2087
-----------	-----------



CATEGORY	A	B	C	D
LNVA MDA	2880-1 793 (800-1)	2880-1¼ 793 (800-1¼)		NA
CIRCLING	2880-1 788 (800-1)	2900-1¼ 808 (900-1¼)		NA

REIL Rwy 20 **1**
MIRL Rwy 2-20 **1**