

BERRIEN SPRINGS, MICHIGAN

AL-10238 (FAA)

23110

WAAS CH <b>42840</b> W31A	APP CRS <b>314°</b>	Rwy Idg TDZE Apt Elev	<b>3019</b> <b>669</b> <b>674</b>
---------------------------------	------------------------	-----------------------------	---

# RNAV (GPS) RWY 31

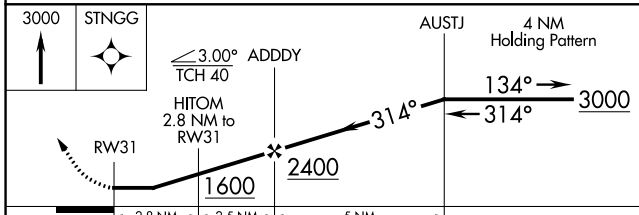
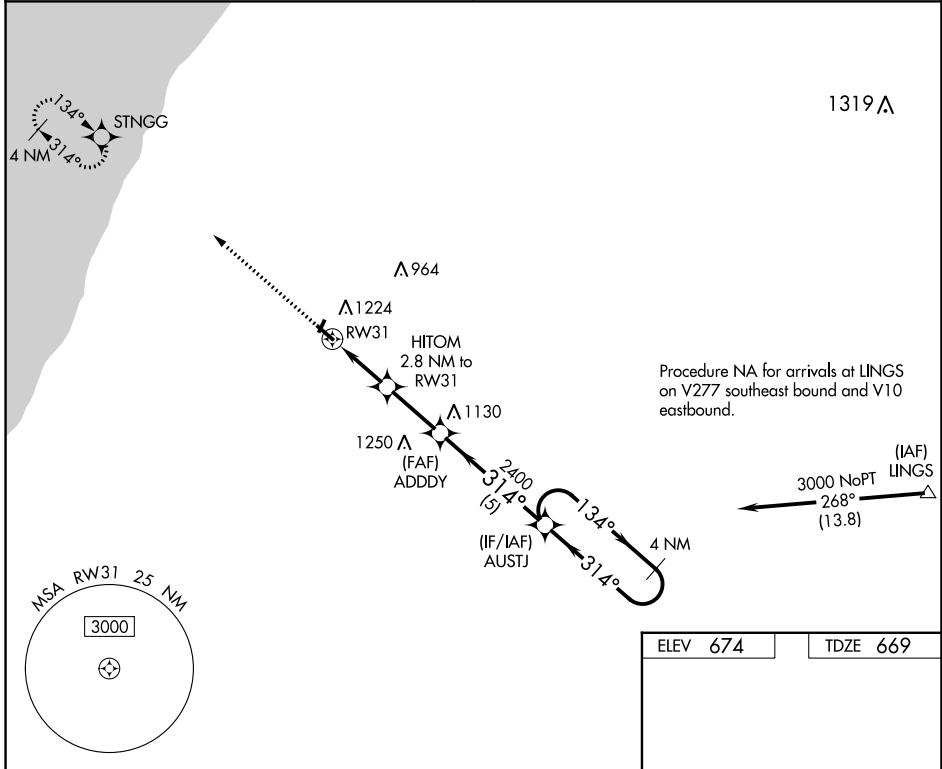
ANDREWS UNIVERSITY AIRPARK (C20)

**⚠** Rwy 31 helicopter visibility reduction below 1 SM NA. DME/DME RNP-0.3 NA. Procedure NA at night. Use Benton Harbor altimeter setting; when not received, use South Bend Intl altimeter setting and increase all MDA 40 feet. Increase LP and LNAV Cats C/D visibility 1/2 SM and Circling Cats B/C 1/4 SM.

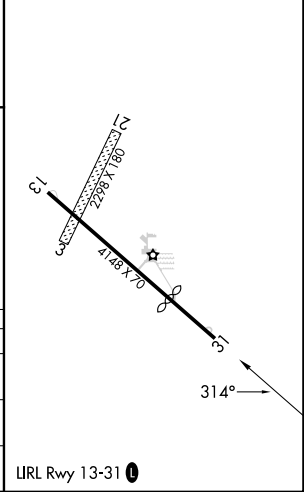
**⚠ NA** MISSED APPROACH: Climb to 3000 direct STNGG and hold.

SOUTH BEND APP CON ★ **118.55 257.8**

UNICOM **122.7 (CTAF) 0**



ELEV 674	TDZE 669
----------	----------



CATEGORY	A	B	C	D
LP MDA	1100-1	431 (500-1)	1100-1¼	431 (500-1¼)
LNAV MDA	1160-1	491 (500-1)	1160-1¾	491 (500-1¾)
<b>C</b> CIRCLING	1620-1¼	946 (1000-1¼)	1620-2¾ 946 (1000-2¾)	1620-3 946 (1000-3)

IIRL Rwy 13-31 0

BERRIEN SPRINGS, MICHIGAN  
Orig 17AUG17

41°57'N-86°22'W

# ANDREWS UNIVERSITY AIRPARK (C20)

## RNAV (GPS) RWY 31

EC-1, 28 NOV 2024 to 26 DEC 2024

EC-1, 28 NOV 2024 to 26 DEC 2024