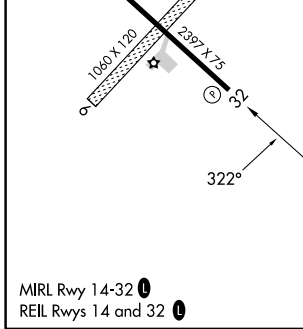
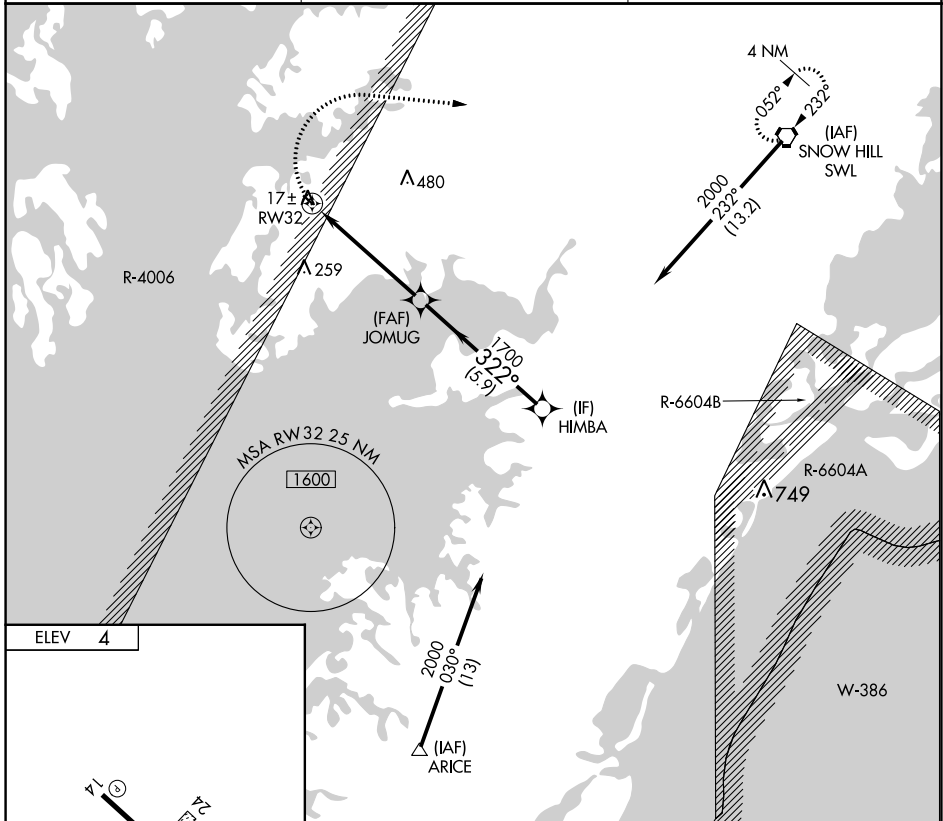


APP CRS 322°	Rwy Idg TDZE Apt Elev	N/A N/A 4
------------------------	-----------------------------	--------------------------------------

RNAV (GPS)-B

CRISFIELD-SOMERSET COUNTY (W41)

RNP APCH. Circling NA to Rwys 6 and 24. NA Procedure NA at night. Use Wallops Island altimeter setting.		MISSED APPROACH: Climbing right turn to 2000 direct SWL VORTAC and hold.
WAL ASOS 119.175	PATUXENT APP CON ★ 127.95 314.0	UNICOM 122.8 (CTAF) 0



ELEV	4
Visual Segment - Obstacles.	SWL
HIMBA JOMUG RW32 2000 1700 322°	
5.2 NM 5.9 NM	
CATEGORY	A B C D
CIRCLING	520-1 516 (600-1) NA

NE-3, 28 NOV 2024 to 26 DEC 2024

NE-3, 28 NOV 2024 to 26 DEC 2024