

APP CRS	Rwy Idg	<b>5001</b>
<b>173°</b>	TDZE	<b>240</b>
	Apt Elev	<b>240</b>

# RNAV (GPS) RWY 17

MILLEN (2J5)

RNP APCH.

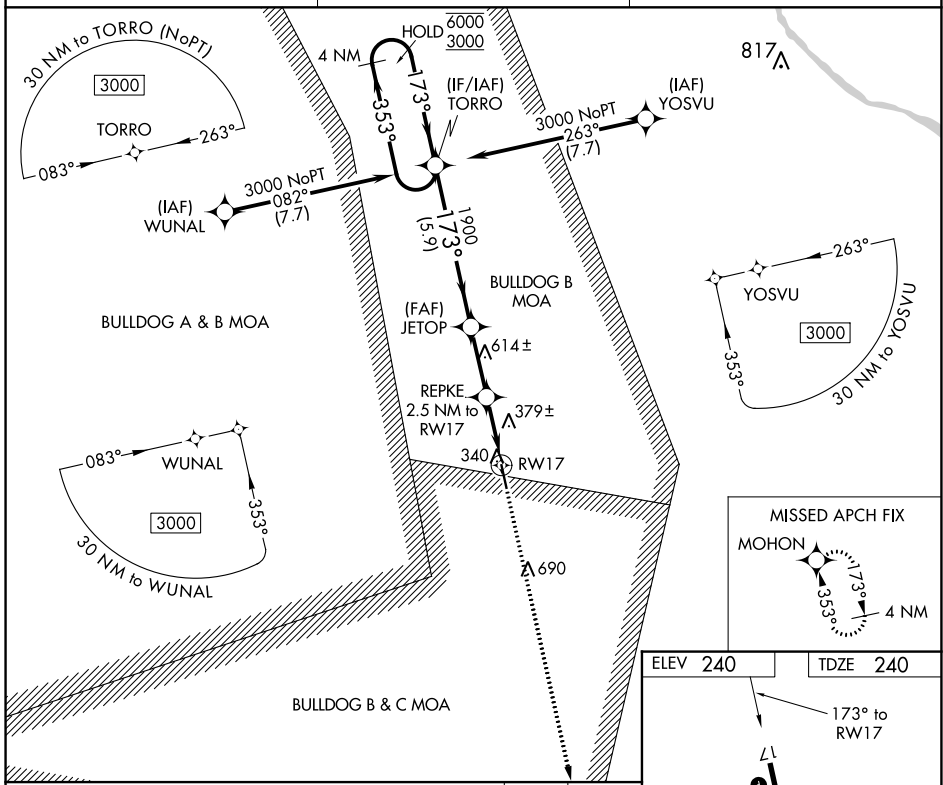
**⚠** Circling NA east of Rwy 17-35. Rwy 17 helicopter visibility reduction below 1 SM NA. Straight-in and Circling Rwy 17 NA at night.

MISSED APPROACH: Climb to 3000 direct MOHON and hold.

AWOS-3PT  
**120.2**

AUGUSTA APP CON \*  
**126.8 270.3**

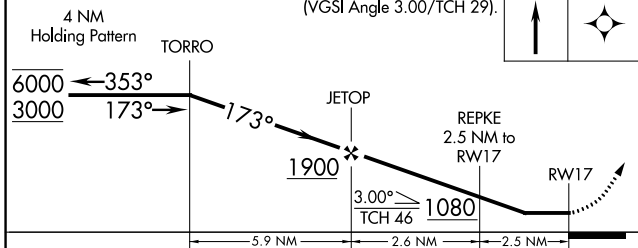
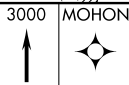
CTAF  
**122.90**



SE-4, 28 NOV 2024 to 26 DEC 2024

SE-4, 28 NOV 2024 to 26 DEC 2024

VGSI and descent angles not coincident (VGSI Angle 3.00/TCH 29).



CATEGORY	A	B	C	D
LNVA MDA	640-1	400 (400-1)	640-1½	400 (400-1½)
<b>C</b> CIRCLING	680-1 440 (500-1)	700-1 460 (500-1)	700-1½ 460 (500-1½)	1040-2½ 800 (800-2½)

