

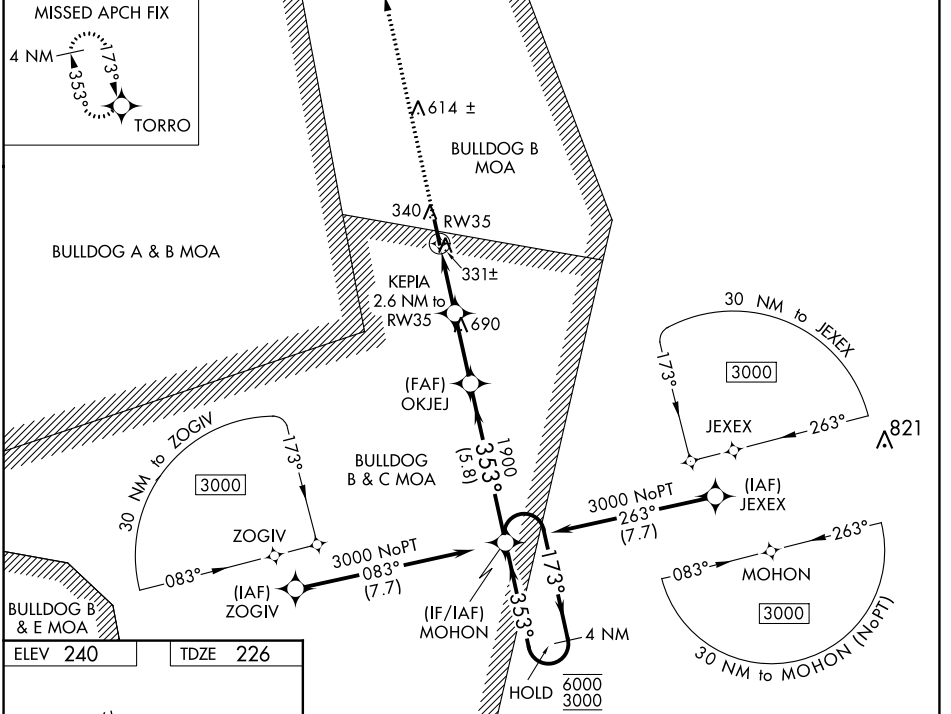
WAAS CH 53718 W35A	APP CRS 353°	Rwy Idg TDZE 226 Apt Elev 240	5001
--	------------------------	---	-------------

RNAV (GPS) RWY 35

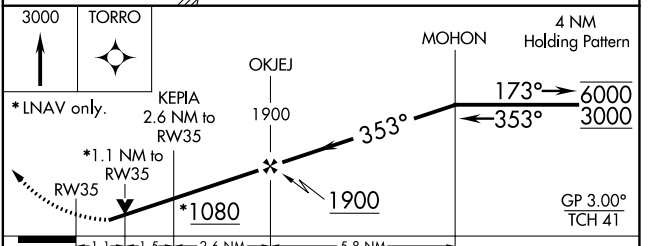
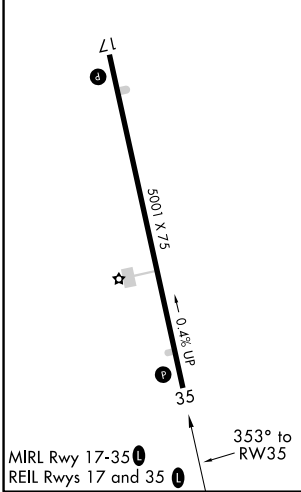
MILLEN (2J5)

RNP APCH.	<p>▽ Circling NA east of Rwy 17-35. For uncompensated Baro-VNAV systems, LNAV/VNAV NA below -15°C or above 54°C. Rwy 35 helicopter visibility reduction below ¼ SM NA. Circling Rwy 17 NA at night.</p> <p>▲</p>	<p>MISSED APPROACH: Climb to 3000 direct TORRO and hold.</p>
-----------	--	---

AWOS-3PT 120.2	AUGUSTA APP CON * 126.8 270.3	CTAF 122.90
--------------------------	---	-----------------------



ELEV 240	TDZE 226
----------	----------



CATEGORY	A	B	C	D
LPV DA		476-1	250 (300-1)	
LNAV/VNAV DA		633-1½	407 (400-1½)	
LNAV MDA		600-1	374 (400-1)	
C CIRCLING	680-1 440 (500-1)	700-1 460 (500-1)	700-1½ 460 (500-1½)	1040-2½ 800 (800-2½)

SE-4, 28 NOV 2024 to 26 DEC 2024

SE-4, 28 NOV 2024 to 26 DEC 2024