

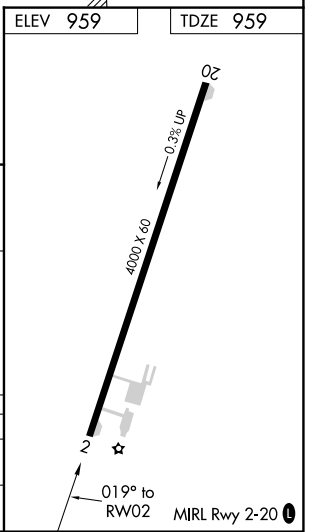
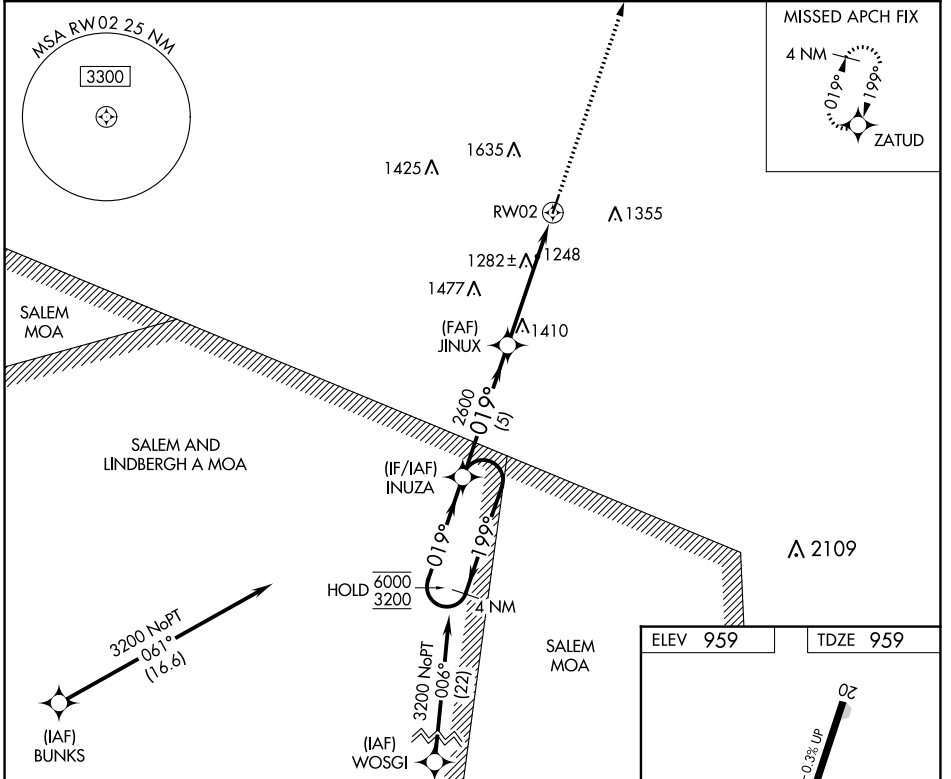
WAAS CH 93624 W02A	APP CRS 019°	Rwy Idg TDZE Apt Elev	4000 959 959
--	------------------------	-----------------------------	---

RNAV (GPS) RWY 2

WASHINGTON COUNTY (8WC)

RNP APCH-GPS.		MISSED APPROACH: Climb to 3100 direct ZATUD and hold.
NA Rwy 2 helicopter visibility reduction below 3/4 SM NA. Use Farmington altimeter setting.		

FAM AWOS-3PT 119.275	KANSAS CITY CENTER 128.35 284.675	UNICOM 123.0 (CTAF)
--------------------------------	---	-------------------------------



4 NM Holding Pattern		Visual Segment - Obstacles.		3100	ZATUD
6000	← 199°	JINUX	↑	↑	
3200	→ 019°	2600	→ 019°		
		5 NM	5 NM		
CATEGORY	A	B	C	D	
LP MDA	1680-1	721 (800-1)		NA	
LNAV MDA	1760-1 801 (900-1)	1760-1¼ 801 (900-1¼)		NA	

NC-3, 28 NOV 2024 to 26 DEC 2024

NC-3, 28 NOV 2024 to 26 DEC 2024