

VORTAC ROD	APP CRS	Rwy Idg	5000
117.5	249°	TDZE	1122
Chan 122		Apt Elev	1122

VOR RWY 25

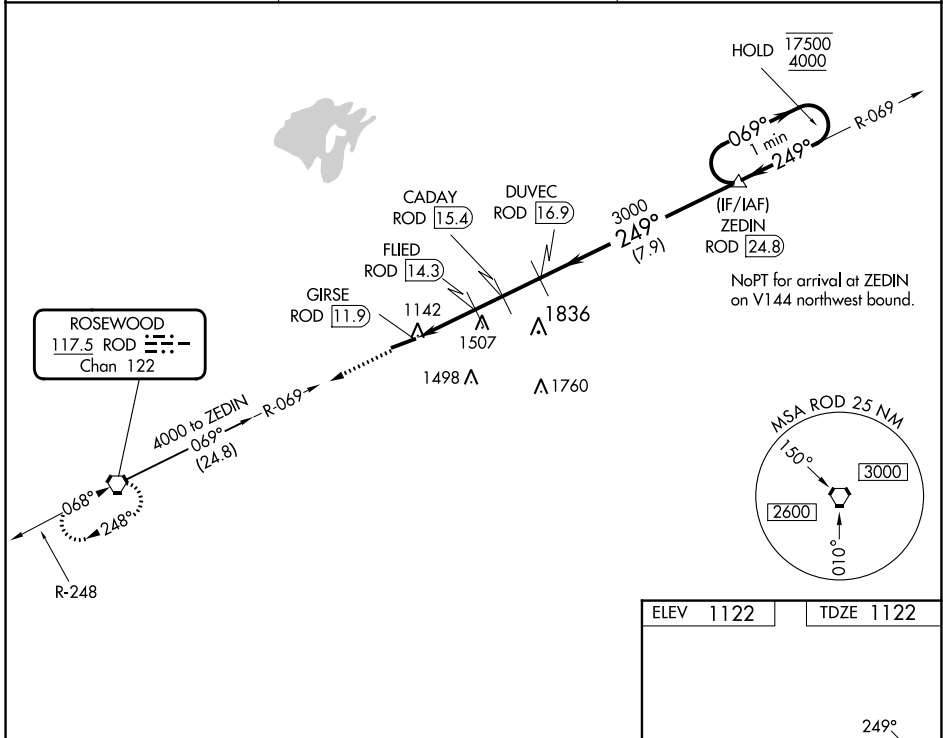
BELLEVILLE RGNL (E.D.J)

DME required.

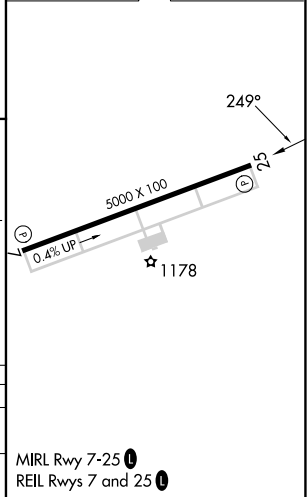
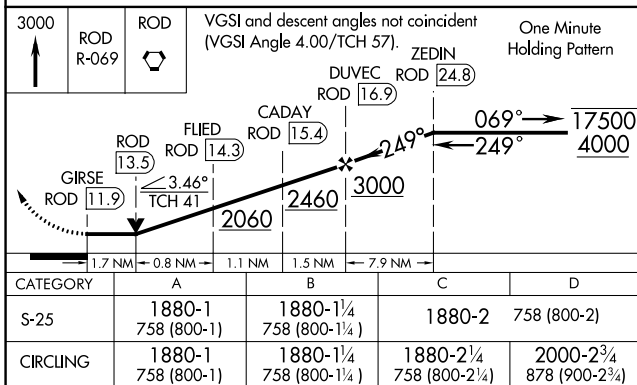
⚠ Rwy 25 helicopter visibility reduction below 3/4 SM NA. When local altimeter setting not received, use James M Cox Dayton Intl altimeter setting and increase all MDAs 100 feet, and S-25 visibility Cats C and D 1/2 SM, and Circling visibility Cats A, C, and D 1/4 SM. VDP NA when using James M Cox Dayton Intl altimeter setting.

MISSED APPROACH: Climb to 3000 on ROD R-069 to ROD VORTAC and hold.

AWOS-3 118.075	COLUMBUS APP CON 134.45 294.5	UNICOM 122.8 (CTAF)
--------------------------	---	-------------------------------



ELEV 1122	TDZE 1122
-----------	-----------



EC-2, 28 NOV 2024 to 26 DEC 2024

EC-2, 28 NOV 2024 to 26 DEC 2024