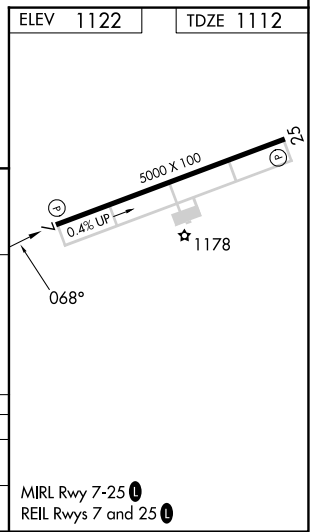
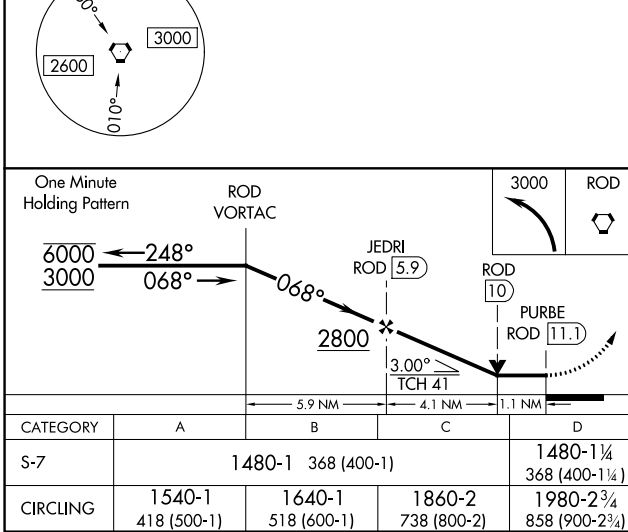
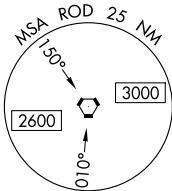
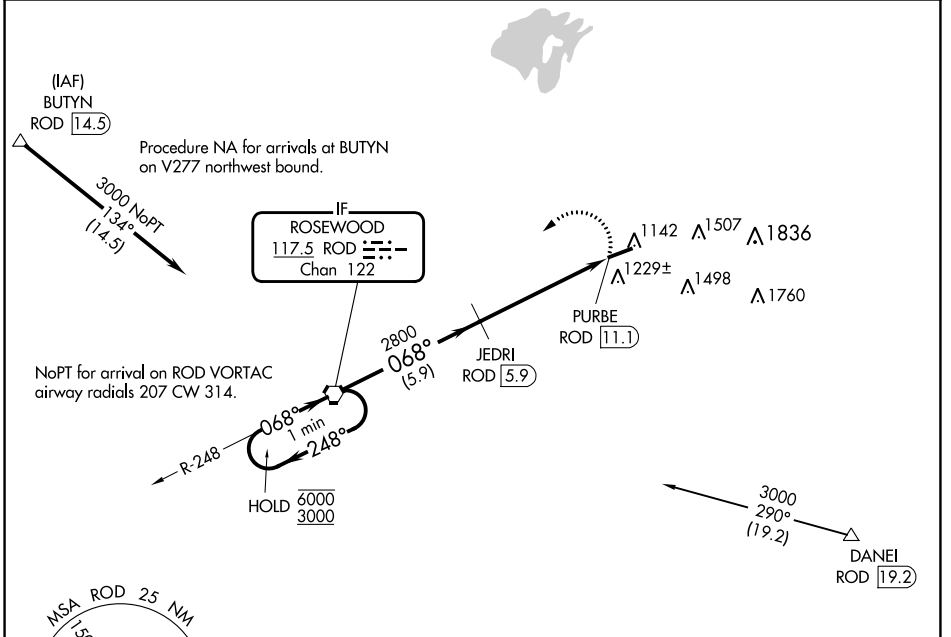


VORTAC ROD <b>117.5</b> Chan <b>122</b>	APP CRS <b>068°</b>	Rwy Idg TDZE <b>1112</b> Apt Elev <b>1122</b>	<b>5000</b> <b>1112</b> <b>1122</b>
---	------------------------	---	---

# VOR RWY 7

BELLEFONTAINE RGNL (EDJ)

DME required.		MISSED APPROACH: Climbing left turn to 3000 direct ROD VORTAC and hold.
AWOS-3 <b>118.075</b>	COLUMBUS APP CON <b>134.45 294.5</b>	UNICOM <b>122.8</b> (CTAF) <b>0</b>



EC-2, 28 NOV 2024 to 26 DEC 2024

EC-2, 28 NOV 2024 to 26 DEC 2024