

WAAS CH <b>93715</b> <b>W36A</b>	APP CRS <b>001°</b>	Rwy Idg <b>5002</b> TDZE <b>835</b> Apt Elev <b>845</b>
--	------------------------	---

# RNAV (GPS) RWY 36

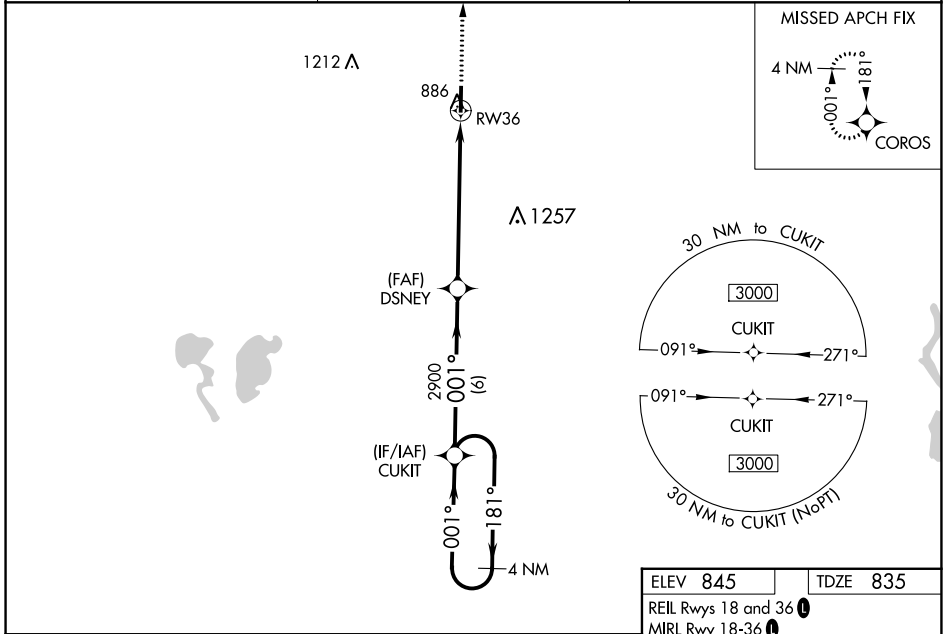
NORTH CENTRAL MISSOURI RGNL (M08)

RNP APCH.

**⚠ NA** For uncompensated Baro-VNAV systems, LNAV/VNAV NA below -16°C or above 54°C. Baro-VNAV and VDP NA when using Kirksville altimeter setting. When local altimeter setting not received, use Kirksville altimeter setting and increase all LPV and LNAV/VNAV DA to 1169 feet and increase all visibility 1/8 mile; increase all MDA 100 feet, increase LNAV Cat C/D visibility 1/4 mile, and Circling Cat C visibility 1/8 mile. Rwy 36 helicopter visibility reduction below 3/4 SM NA.

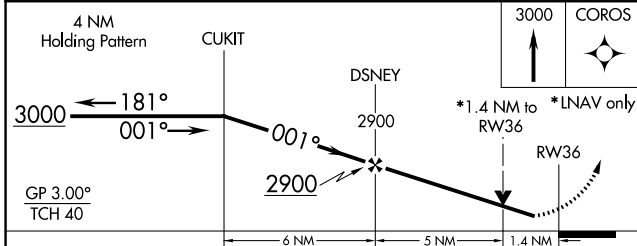
**MISSED APPROACH:**  
Climb to 3000 direct COROS and hold.

AWOS-2 <b>118.425</b>	KANSAS CITY CENTER <b>125.25 235.975</b>	CTAF <b>122.9</b>
--------------------------	---	----------------------

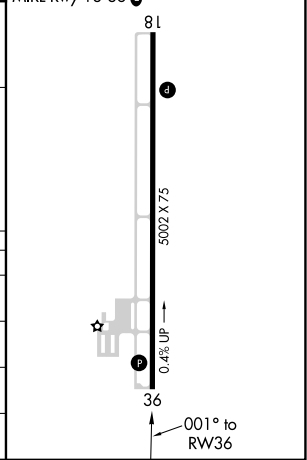


NC-3, 28 NOV 2024 to 26 DEC 2024

NC-3, 28 NOV 2024 to 26 DEC 2024



ELEV <b>845</b>	TDZE <b>835</b>
REIL Rwys 18 and 36 <b>1</b>	
MIRL Rwy 18-36 <b>1</b>	



CATEGORY	A	B	C	D
LPV DA		1085-1	250 (300-1)	
LNAV/VNAV DA		1085-1	250 (300-1)	
LNAV MDA	1300-1	465 (500-1)	1300-1 3/8	465 (500-1 3/8)
<b>C</b> CIRCLING	1300-1	455 (500-1)	1300-1 1/2	1400-2
			455 (500-1 1/2)	555 (600-2)