

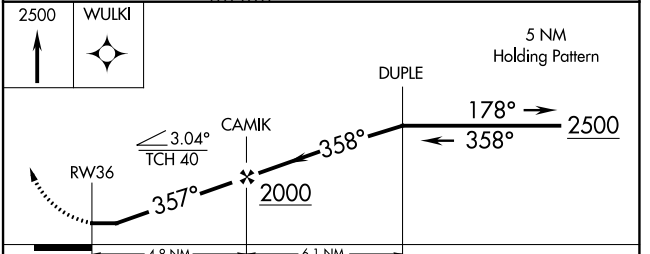
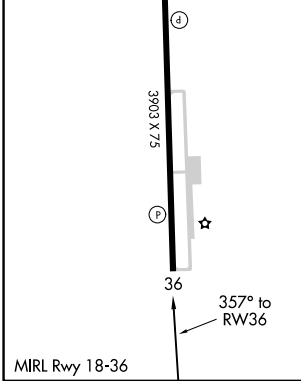
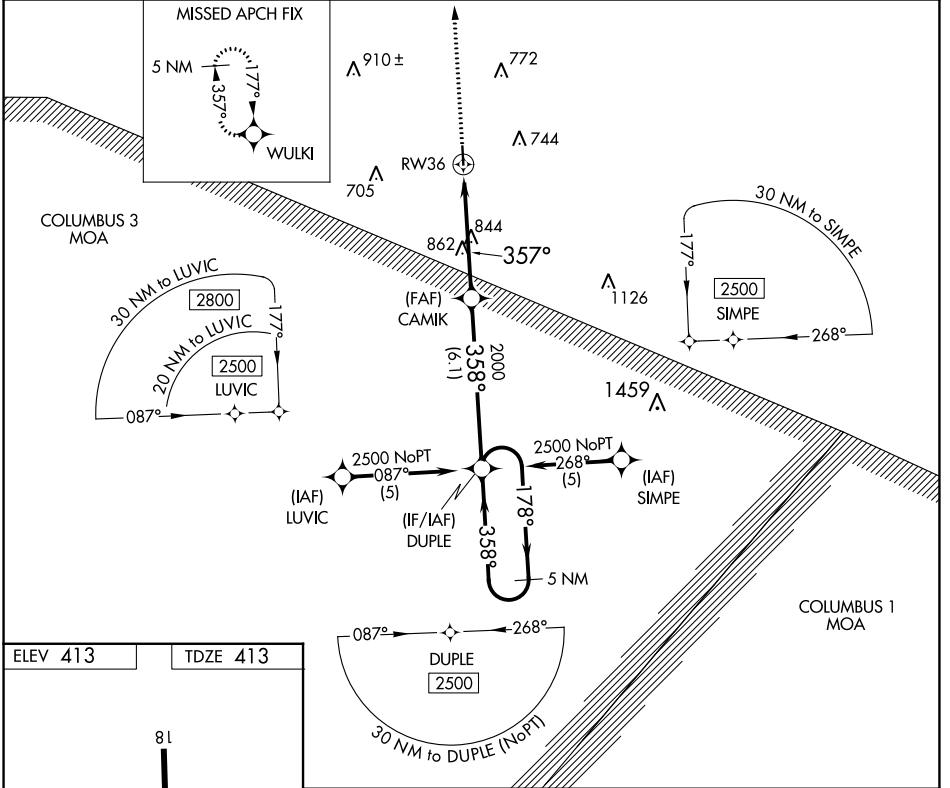
APP CRS **357°**
 Rwy Idg **3903**
 TDZE **413**
 Apt Elev **413**

RNAV (GPS) RWY 36
 NEW ALBANY/UNION COUNTY (M72)

▼ Use Tupelo altimeter setting, if not received, use Oxford altimeter setting and increase all MDAs 20 feet. Procedure NA at night. DME/DME RNP-0.3 NA.
▲ NA Visibility reduction by helicopters NA.

MISSED APPROACH: Climb to 2500 direct WULKI and hold.

TUP ASOS 133.525	MEMPHIS CENTER 135.9 273.55	UNICOM 122.8 (CTAF)
-----------------------------------	--	--------------------------------------



CATEGORY	A	B	C	D
LNAV MDA	1220-1 807 (900-1)	1220-1¼ 807 (900-1¼)	1220-2¼ 807 (900-2¼)	NA
CIRCLING	1220-1 807 (900-1)	1220-1¼ 807 (900-1¼)	1220-2¼ 807 (900-2¼)	NA

SC-4, 28 NOV 2024 to 26 DEC 2024

SC-4, 28 NOV 2024 to 26 DEC 2024