

WAAS CH 58014 W01A	APP CRS 020°	Rwy Idg 3401 TDZE 162 Apt Elev 162
--	------------------------	---

RNAV (GPS) RWY 1

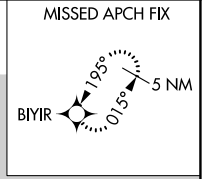
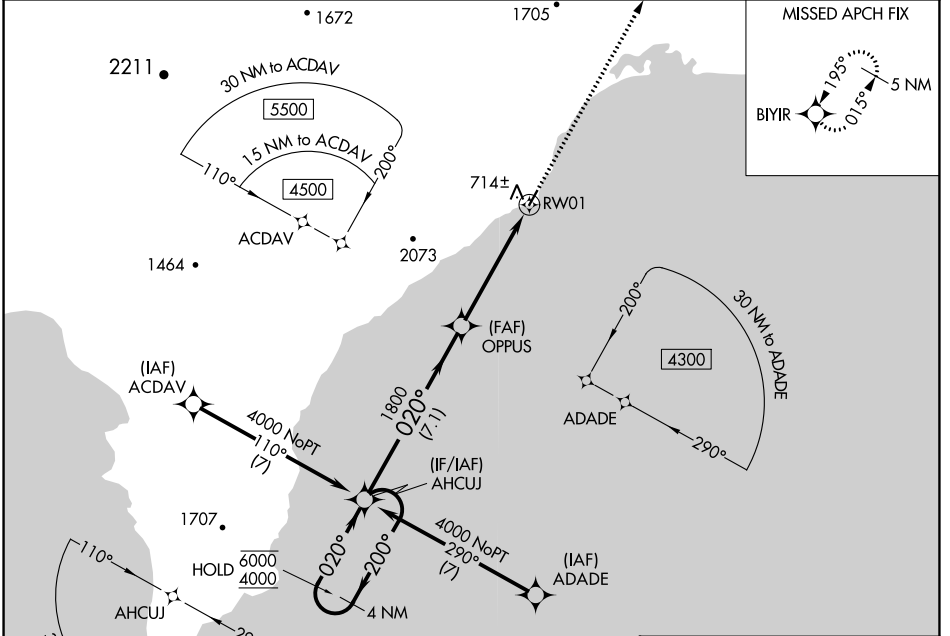
ELIM (ELI) (PFEL)

RNP APCH-GPS.

⚠ Circling to Rwy 19 NA at night. For uncompensated Baro-VNAV systems, LNAV/VNAV NA below -18°C or above 54°C.
⚠ -29°C

MISSED APPROACH: Climb to 5000 direct BIYIR and hold, continue climb-in hold to 5000.

AWOS-3P 121.425	ANCHORAGE CENTER 133.3 290.4	NOME RADIO 122.15	CTAF 122.8
---------------------------	--	-----------------------------	----------------------



4 NM Holding Pattern AHCJU

6000 ← 200° 4000 → 020°

GP 3.00° TCH 55

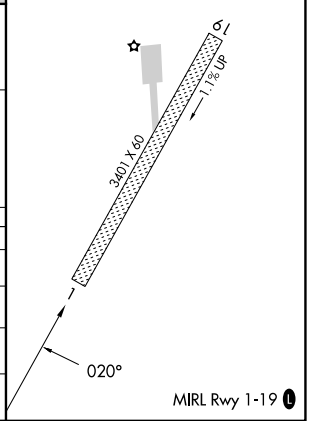
1800 020° 1800

OPPUS 2.4 NM to RW01 RW01

7.1 NM 2.6 NM 2.4 NM

ELEV 162	TDZE 162
----------	----------

CATEGORY	A	B	C	D
LPV DA	668-1 $\frac{3}{8}$		506 (600-1 $\frac{3}{8}$)	
LNAV/VNAV DA	895-2		733 (800-2)	
LNAV MDA	980-1 818 (900-1)	980-1 $\frac{1}{4}$ 818 (900-1 $\frac{1}{4}$)	980-2 $\frac{1}{2}$	818 (900-2 $\frac{1}{2}$)
C CIRCLING	980-1 $\frac{1}{4}$ 818 (900-1 $\frac{1}{4}$)	1040-1 $\frac{1}{4}$ 878 (900-1 $\frac{1}{4}$)	1040-2 $\frac{1}{2}$ 878 (900-2 $\frac{1}{2}$)	1040-2 $\frac{3}{4}$ 878 (900-2 $\frac{3}{4}$)



AK, 31 OCT 2024 to 26 DEC 2024

AK, 31 OCT 2024 to 26 DEC 2024