

APP CRS	Rwy ldg	N/A
<b>229°</b>	TDZE	N/A
	Apt Elev	<b>162</b>

# RNAV (GPS)-A

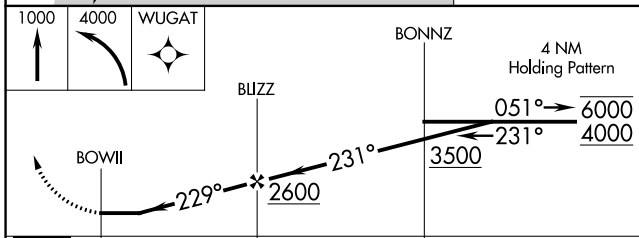
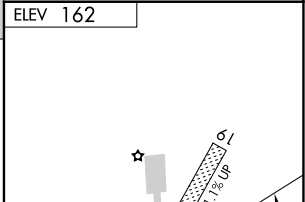
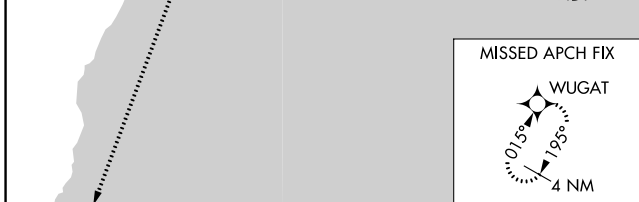
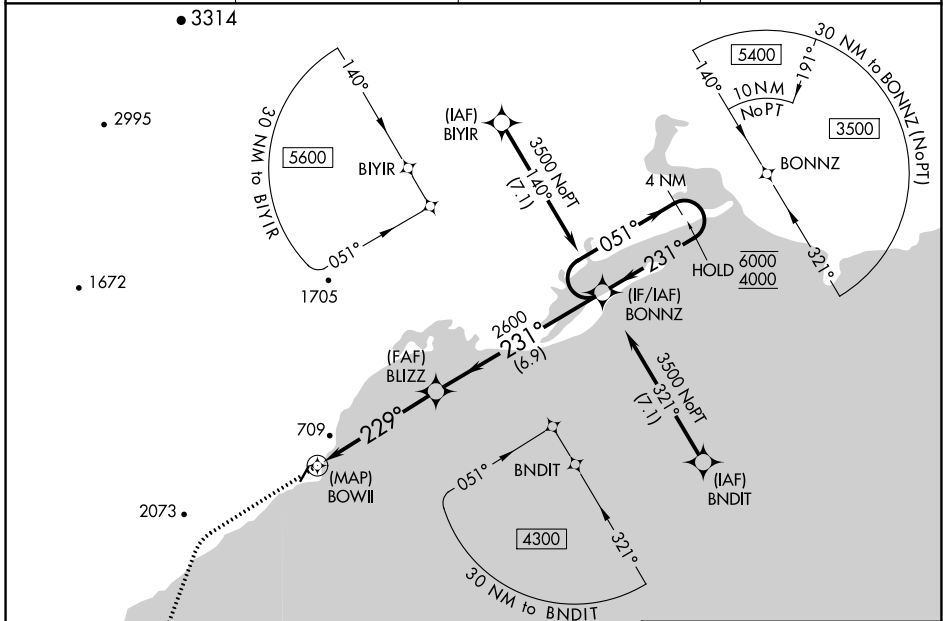
ELIM (ELI) (PFEL)

RNP APCH-GPS.

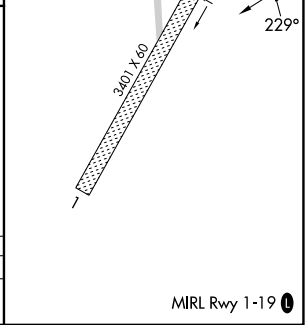
**⚠** Circling to Rwy 19 NA at night. Circling NA west of Rwy 1-19.  
**⚠** Rwy 19 helicopter visibility reduction below 1 SM NA.  
**⚠** -29°C

MISSED APPROACH: Climb to 1000 then climbing left turn to 4000 direct WUGAT and hold.

AWOS-3P <b>121.425</b>	ANCHORAGE CENTER <b>133.3 290.4</b>	NOME RADIO <b>122.15</b>	CTAF <b>122.8</b> <b>0</b>
---------------------------	----------------------------------------	-----------------------------	-------------------------------



CATEGORY	A	B	C	D
<b>C</b> CIRCLING	900-1 738 (800-1)	1040-1¼ 878 (900-1¼)	NA	



AK, 31 OCT 2024 to 26 DEC 2024

AK, 31 OCT 2024 to 26 DEC 2024