

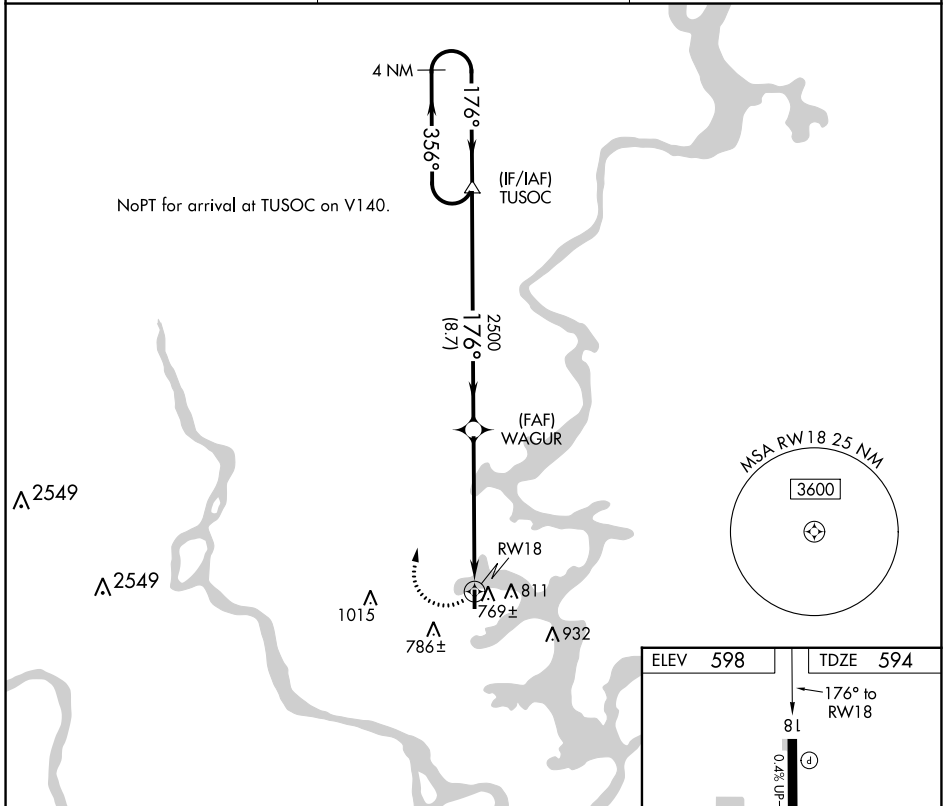
APP CRS 176°	Rwy Idg 3401
	TDZE 594
	Apt Elev 598

RNAV (GPS) RWY 18

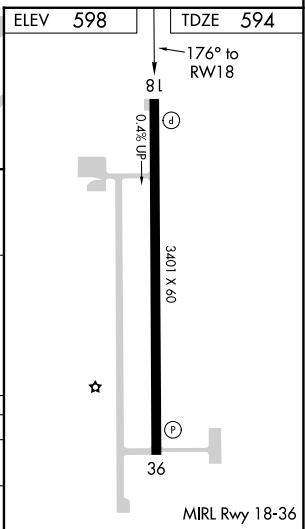
HEFNER-EASLEY (H68)

RNP APCH.	Procedure NA at night. Use Pryor altimeter setting.	MISSED APPROACH: Climbing right turn to 2500 direct TUSOC and hold.
⚠ NA		

H71 AWOS-3PT 120.1	TULSA APP CON 119.1 360.825	CTAF 122.9
------------------------------	---------------------------------------	----------------------



	4 NM Holding Pattern	TUSOC	WAGUR	2500 TUSOC
	← 356°	176° →	176° →	3.05° TCH 37
	2500	2500	2500	RW18
		8.7 NM	5.8 NM	
CATEGORY	A	B	C	D
RNAV MDA	1080-1	486 (500-1)		NA
CIRCLING	1180-1	582 (600-1)		NA



SC-1, 28 NOV 2024 to 26 DEC 2024

SC-1, 28 NOV 2024 to 26 DEC 2024