

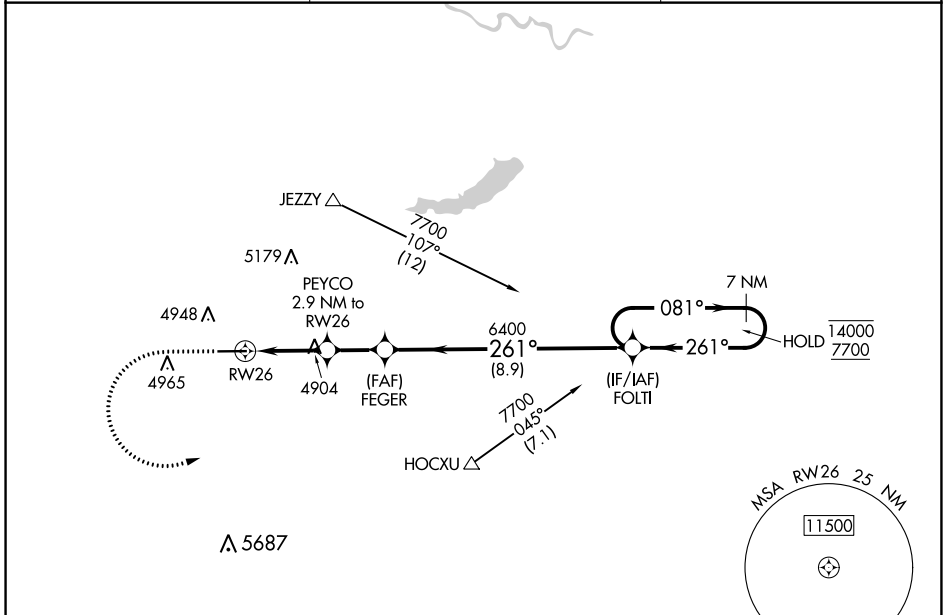
WAAS CH 61342	APP CRS 261°	Rwy Idg TDZE Apt Elev	5900 4775 4779
-------------------------	------------------------	-----------------------------	---

RNAV (GPS) RWY 26

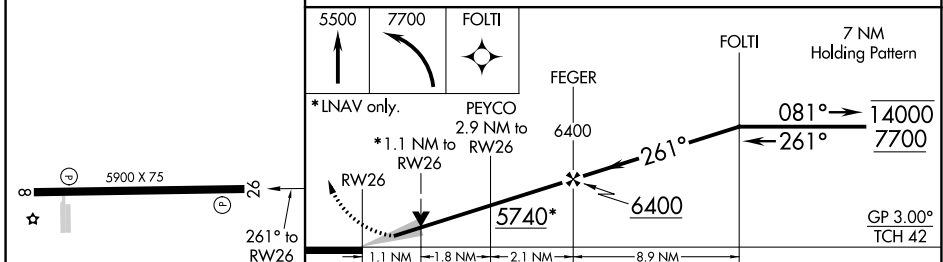
PHIFER AIRFIELD (E.A.N)

RNP APCH.	MISSED APPROACH: Climb to 5500 then climbing left turn to 7700 direct to FOLTI and hold.
<p>Circling Rwy 8 NA at night. For uncompensated Baro-VNAV systems, LNAV/VNAV NA below -24°C or above 54°C.</p>	

AWOS-3PT 121.125	DENVER CENTER 135.6 363.025	CTAF 122.9
----------------------------	---------------------------------------	----------------------



ELEV 4779	TDZE 4775
-----------	-----------



CATEGORY	A	B	C	D
LPV DA	4975-1	200 (200-1)		NA
LNAV/VNAV DA	5025-1	250 (300-1)		NA
LNAV MDA	5160-1	385 (400-1)	5160-1 $\frac{1}{8}$ 385 (400-1 $\frac{1}{8}$)	NA
CIRCLING	5260-1 481 (500-1)	5280-1 501 (600-1)	5300-1 $\frac{1}{2}$ 521 (600-1 $\frac{1}{2}$)	NA

NW-1, 28 NOV 2024 to 26 DEC 2024

NW-1, 28 NOV 2024 to 26 DEC 2024

REIL Rwy 26
MIRL Rwy 8-26