

WAAS CH <b>82028</b> <b>W27A</b>	APP CRS <b>272°</b>	Rwy Idg TDZE Apt Elev	<b>6000</b> <b>7126</b> <b>7171</b>
--	------------------------	-----------------------------	---

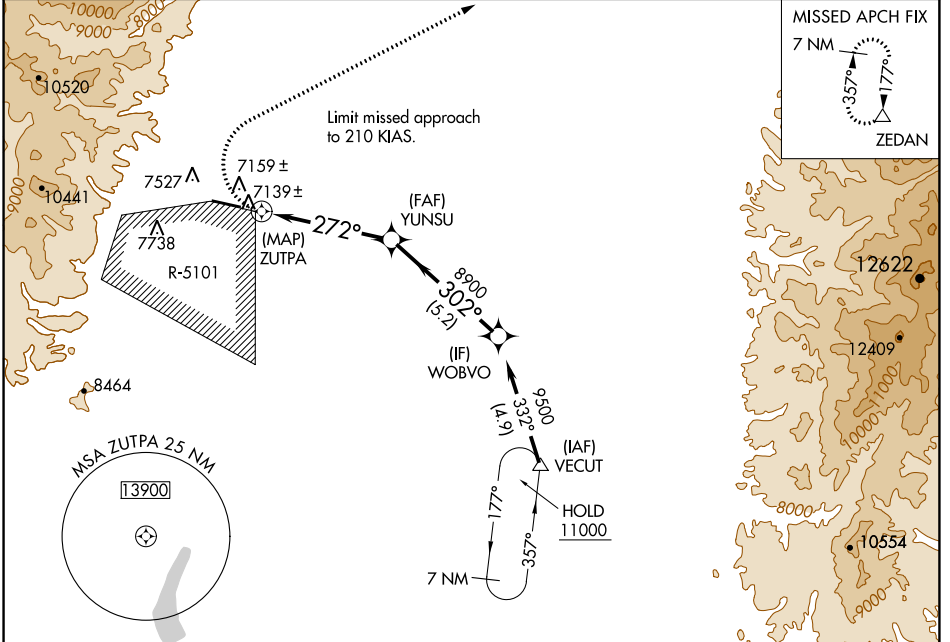
# RNAV (GPS) Y RWY 27

LOS ALAMOS (L.A.M)

**⚠** When local altimeter setting not received, procedure NA. \*LP and \*LNAV missed approach requires a minimum climb of 280 feet per NM to 8500. DME/DME RNP-0.3 NA. Visibility reduction by helicopters NA.

**MISSED APPROACH:**  
Climbing right turn to 11000 direct ZEDAN and hold.

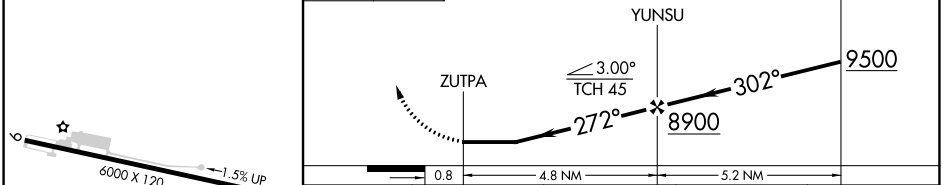
AWOS-3 <b>124.175</b>	ALBUQUERQUE CENTER <b>132.8 346.35</b>	UNICOM <b>123.0 (CTAF)</b> <b>📶</b>
--------------------------	---	--



SW-1, 28 NOV 2024 to 26 DEC 2024

SW-1, 28 NOV 2024 to 26 DEC 2024

ELEV 7171	TDZE 7126	11000	ZEDAN
-----------	-----------	-------	-------



CATEGORY	A	B	C	D
LP MDA*	7580-1	454 (500-1)	7580-1 3/8 454 (500-1 3/8)	NA
LP MDA	7700-1	574 (600-1)	7700-1 1/8 574 (600-1 1/8)	NA
LNAV MDA*	7640-1	514 (500-1)	7640-1 5/8 514 (500-1 5/8)	NA
LNAV MDA	7880-1 754 (800-1)	7880-1 1/4 754 (800-1 1/4)	7880-2 1/2 754 (800-2 1/2)	NA
CIRCLING	NA			

REIL Rwy 27 **📶**  
MIRL Rwy 9-27 **📶**