

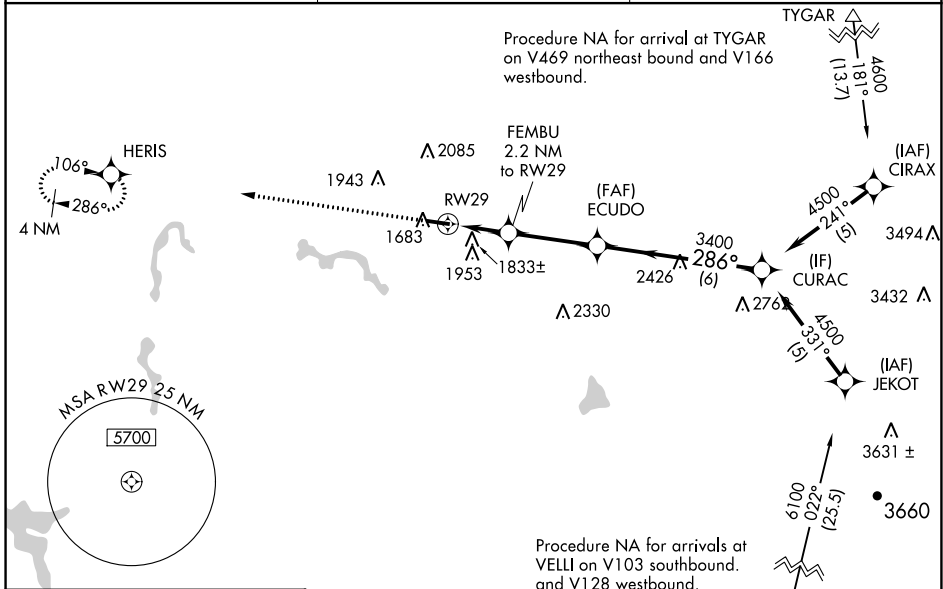
WAAS CH 56624 W29A	APP CRS 286°	Rwy ldg TDZE Apt Elev	4201 1635 1635
--	------------------------	-----------------------------	---

RNAV (GPS) RWY 29

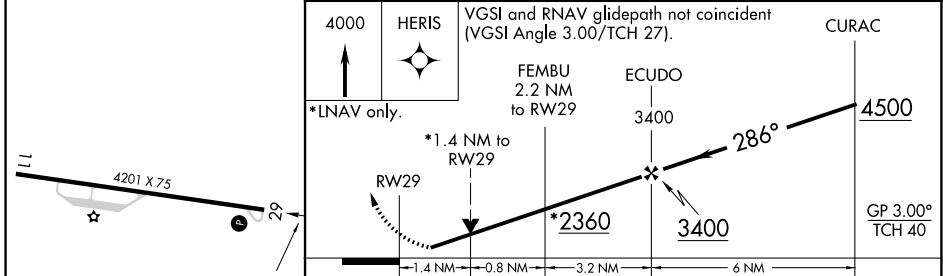
UPSHUR COUNTY RGNL (W22)

RNP APCH.	<p>▲ For uncompensated Baro-VNAV systems, LNAV/VNAV NA below -18°C or above 54°C. Rwy 29 helicopter visibility reduction below 3/4 SM NA.</p>	MISSED APPROACH: Climb to 4000 direct HERIS and hold.

AWOS-3 119.975	CLARKSBURG APP CON ★ 121.15 284.65	UNICOM 122.8 (CTAF) 0
--------------------------	--	---------------------------------



ELEV 1635	TDZE 1635
-----------	-----------



	CATEGORY	A	B	C	D
LPV DA		1885-1	250 (300-1)		NA
LNAV/VNAV DA		2125-1 3/4	490 (500-1 3/4)		NA
LNAV MDA		2100-1	465 (500-1)	2100-1 3/8 465 (500-1 3/8)	NA
CIRCLING		2240-1 605 (700-1)	2260-1 625 (700-1)	2400-2 1/4 765 (800-2 1/4)	NA

NE-4, 28 NOV 2024 to 26 DEC 2024

NE-4, 28 NOV 2024 to 26 DEC 2024