

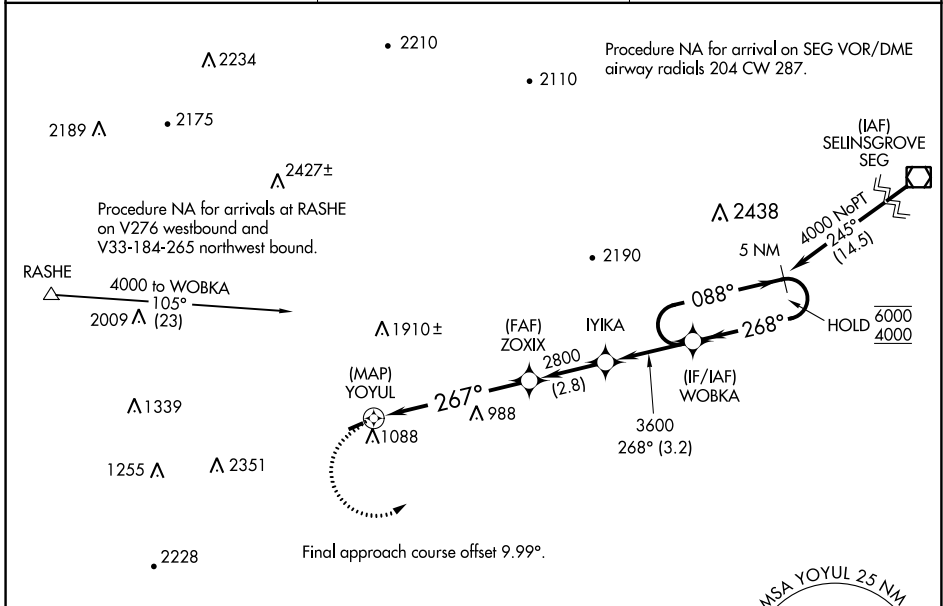
| | |
|------------------------|------------------------|
| APP CRS 267° | Rwy Idg 2627 |
| | TDZE 545 |
| | Apt Elev 545 |

RNAV (GPS) RWY 26

MIFFLINTOWN (P34)

| | | |
|--|--|--|
| RNP APCH - GPS. | | MISSED APPROACH: Climbing left turn to 4000 direct WOBKA and hold, continue climb-in-hold to 4000. |
| <p>▼ Procedure NA at night. Rwy 26 helicopter visibility reduction below 1 SM NA.</p> <p>▲ NA Circling NA north of Rwy 8-26. Use Penn Valley altimeter setting; when not received, use Reedsville altimeter setting and increase all MDAs 240 feet and LNAV visibility Cat B ¼ SM.</p> | | |

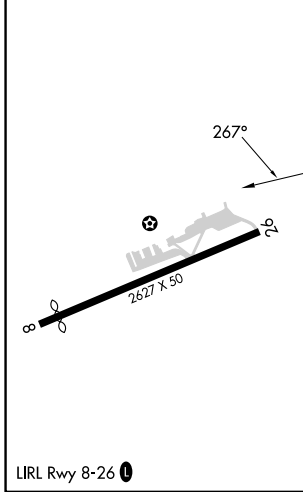
| | | |
|----------------------------|--|-------------------------------|
| SEG ASOS 123.975 | NEW YORK APP CON 134.8 338.3 | UNICOM 122.8 (CTAF) |
|----------------------------|--|-------------------------------|



NE-4, 28 NOV 2024 to 26 DEC 2024

NE-4, 28 NOV 2024 to 26 DEC 2024

| | | | |
|------|-----|------|-----|
| ELEV | 545 | TDZE | 545 |
|------|-----|------|-----|



| | | | | |
|----------|---------------------------|---------------------------|----------------------|--------|
| | WOBKA | | 5 NM Holding Pattern | |
| | (MAP) YOYUL | ZOXIX | IYIKA | WOBKA |
| | 267° | 2800 | 3600 | 268° |
| | 0.5 | 5.7 NM | 2.8 NM | 3.2 NM |
| CATEGORY | A | B | C | D |
| LNAV MDA | 1440-1¼ | 895 (900-1¼) | NA | |
| CIRCLING | 1560-1¼ 1015 (1100-1¼) | 2080-1½ 1535 (1600-1½) | NA | |