

APP CRS	Rwy Idg	<b>3200</b>
<b>003°</b>	TDZE	<b>80</b>
	Apt Elev	<b>80</b>

# RNAV (GPS) RWY 36

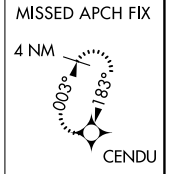
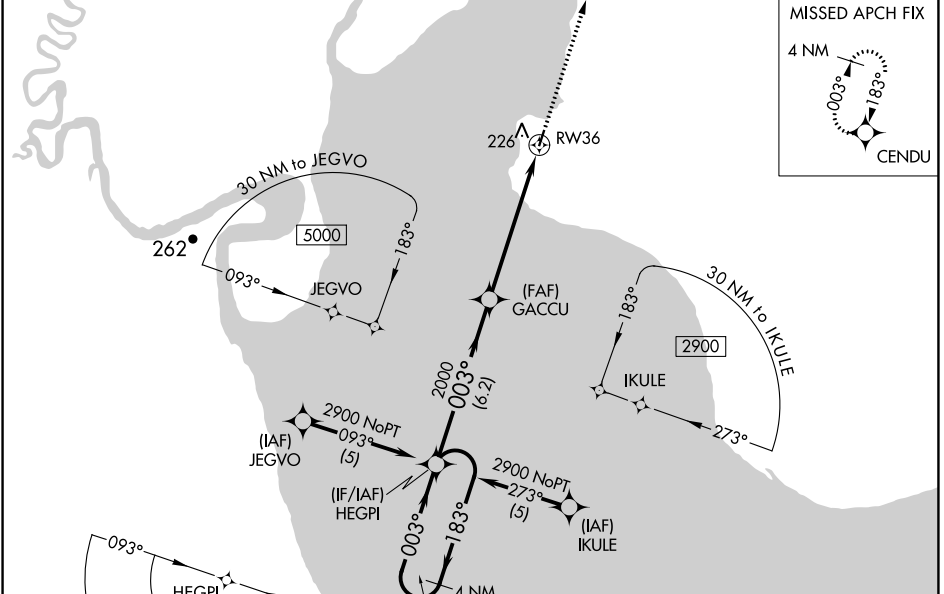
CLARKS POINT (CLP) (PF/CL)

RNP APCH-GPS.

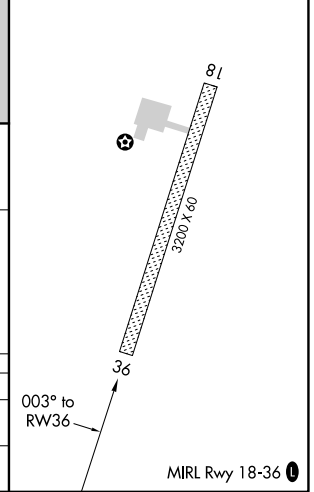
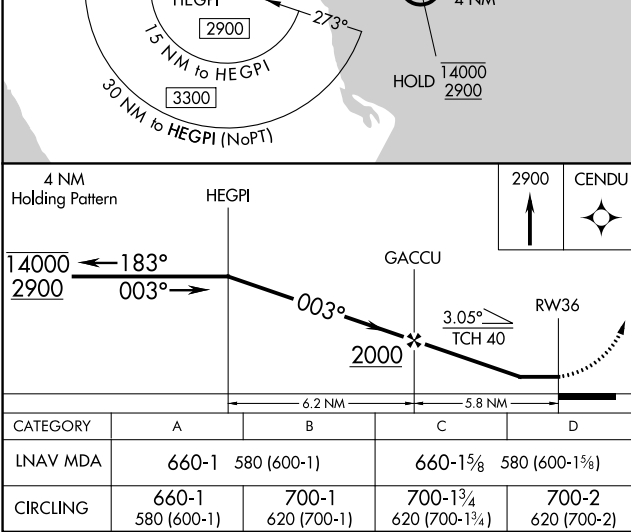
**⚠** Rwy 36 helicopter visibility reduction below 1 SM NA. Rwy 36 Straight-in and Circling minimums NA at night. When local altimeter setting not received, use Dillingham altimeter setting and increase all MDAs 40 feet and LNAV visibility Cat C/D 1/2 SM.

MISSED APPROACH: Climb to 2900 direct CENDU and hold.

AWOS-3P <b>121.45</b>	ANCHORAGE CENTER <b>132.75 282.35</b>	CTAF <b>122.90</b>
--------------------------	--	-----------------------



ELEV 80	TDZE 80
---------	---------



CATEGORY	A	B	C	D
LNAV MDA	660-1	580 (600-1)	660-1 5/8	580 (600-1 5/8)
CIRCLING	660-1 580 (600-1)	700-1 620 (700-1)	700-1 3/4 620 (700-1 3/4)	700-2 620 (700-2)

AK, 31 OCT 2024 to 26 DEC 2024

AK, 31 OCT 2024 to 26 DEC 2024