

(TJANO1.TJANO) 24025

AL-10309 (FAA)

BOERNE STAGE AIRFIELD (5C1)  
SAN ANTONIO, TEXAS

# TJANO ONE DEPARTURE (RNAV)

SAN ANTONIO DEP CON  
125.1 307.0

RNAV 1 - DME/DME IRU or GPS.  
RADAR required.

**TOP ALTITUDE:  
ASSIGNED BY ATC**

NOTE: For non-GPS equipped aircraft,  
THX and SAT DME must be operational.



### TAKEOFF MINIMUMS

Rwy 17: Standard with minimum climb of  
210'/NM to 2200.

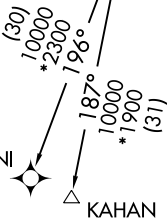
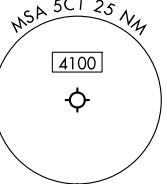
Rwy 35: Standard with minimum climb of  
250'/NM to 3800.

LVACA  
5000

TJANO

10000  
\*2500  
206°  
(37)

TEEPY



### DEPARTURE ROUTE DESCRIPTION

TAKEOFF RUNWAY 17: Climb on heading 169° or as assigned by ATC, for vectors to LVACA, thence . . . .

TAKEOFF RUNWAY 35: Climb on heading 349° or as assigned by ATC, for vectors to LVACA, thence . . . .

. . . . on track 205° to TJANO, then on Transition.  
Maintain ATC assigned altitude.

KAHAN TRANSITION (TJANO1.KAHAN)  
ZANNI TRANSITION (TJANO1.ZANNI)

Note: Chart not to scale.

SC-3, 28 NOV 2024 to 26 DEC 2024

SC-3, 28 NOV 2024 to 26 DEC 2024

TJANO ONE DEPARTURE (RNAV)  
(TJANO1.TJANO) 25JAN24

SAN ANTONIO, TEXAS  
BOERNE STAGE AIRFIELD (5C1)