

GIFFA ONE DEPARTURE

AL-10328 (FAA)

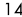
HOUSTON EXEC (TME)


HOUSTON, TEXAS


ATIS
 119.525
 CLNC DEL
 132.075
 GND CON
 132.075
 EXECUTIVE TOWER★
 126.975 (CTAF)
 HOUSTON DEP CON
 123.8 257.7


**TOP ALTITUDE:
 ASSIGNED BY ATC**

NOTE: RADAR required.
 NOTE: For aircraft destined for the DFW
 terminal area only.

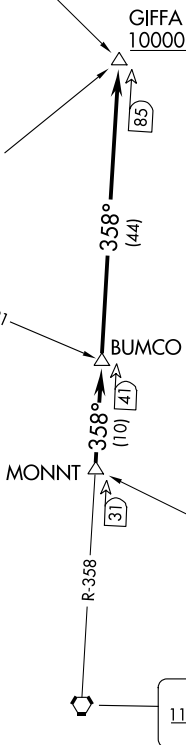
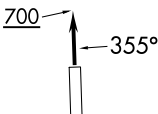
CEDAR CREEK
 114.8 CQY 
 Chan 95

LEONA
 110.8 LOA 
 Chan 45

DAISETTA
 116.9 DAS 
 Chan 116

HUMBLE
 116.6 IAH 
 Chan 113

TAKEOFF MINIMUMS
 Rwy 18, 36: Standard.



(CONTINUED ON FOLLOWING PAGE)

NOTE: Chart not to scale.

SC-5, 28 NOV 2024 to 26 DEC 2024

SC-5, 28 NOV 2024 to 26 DEC 2024

GIFFA ONE DEPARTURE

HOUSTON, TEXAS

HOUSTON EXEC (TME)



DEPARTURE ROUTE DESCRIPTION

TAKEOFF RUNWAY 18: When entering controlled airspace, climb on assigned heading for RADAR vectors to MONNT INT. Maintain ATC assigned altitude. Expect filed altitude 10 minutes after departure, thence . . .

TAKEOFF RUNWAY 36: Climb on heading 355° to 700 before turning. When entering controlled airspace, climb on assigned heading for RADAR vectors to MONNT INT. Maintain ATC assigned altitude. Expect filed altitude 10 minutes after departure, thence . . .

. . . . on IAH R-358 to cross GIFFA INT at or above 10000.

SC-5, 28 NOV 2024 to 26 DEC 2024

SC-5, 28 NOV 2024 to 26 DEC 2024