

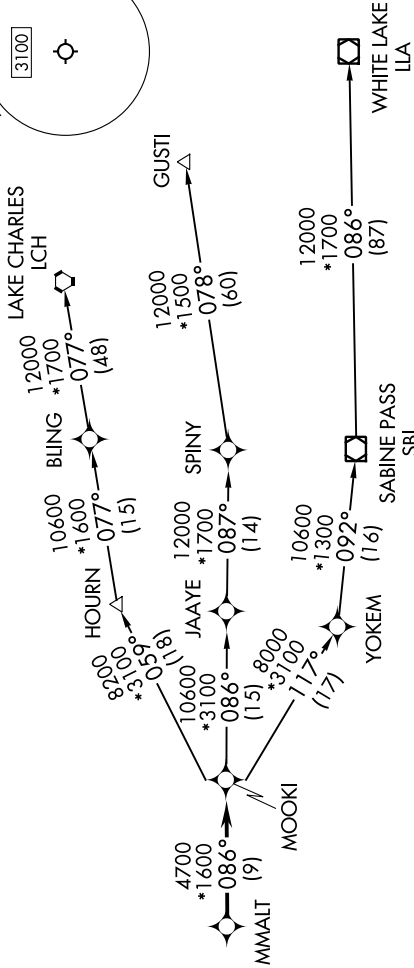
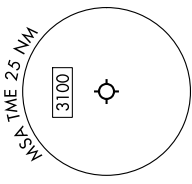
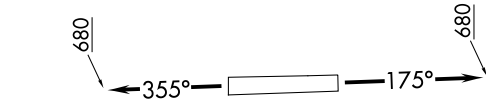
# MMALT SEVEN DEPARTURE (RNAV)

SC-5, 28 NOV 2024 to 26 DEC 2024

HOUSTON DEP CON  
123.8 257.7  
ATIS  
119.525  
CLNC DEL  
132.075  
CTAF  
126.975

RNAV 1 - DME/DME/IRU or GPS.  
RADAR required.

TOP ALTITUDE:  
ASSIGNED BY ATC



NOTE: GUSTI and LCH Transitions ATC assigned only for aircraft departing AXH, EFD, GLS, HPY, IWS, LBX, LVJ, SGR, TME, T00, T41 and 54T.

### DEPARTURE ROUTE DESCRIPTION

**TAKEOFF RUNWAY 18:** Climb on heading 175° to 680, for RADAR vectors to MMALT, thence. . . .  
**TAKEOFF RUNWAY 36:** Climb on heading 355° to 680, for RADAR vectors to MMALT, thence. . . .  
 . . . on track 086° to MOOKI, then on (transition). Maintain ATC assigned altitude.  
 Expect filed altitude 10 minutes after departure.

- GUSTI TRANSITION (MMALT7.GUSTI)
- LAKE CHARLES TRANSITION (MMALT7.LCH)
- WHITE LAKE TRANSITION (MMALT7.LLA)

**TAKEOFF MINIMUMS**  
 Rwy 18, 36: Standard with minimum climb of 500'/NM to 680.

NOTE: Chart not to scale.