

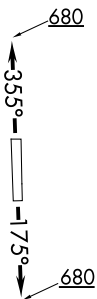
# WYLSN EIGHT DEPARTURE (RNAV)

ATIS  
 119.525  
 CLNC DEL  
 132.075  
 GND CON  
 132.075  
 EXECUTIVE TOWER\*  
 126.975 (CTAF)  
 HOUSTON DEP CON  
 123.8 257.7

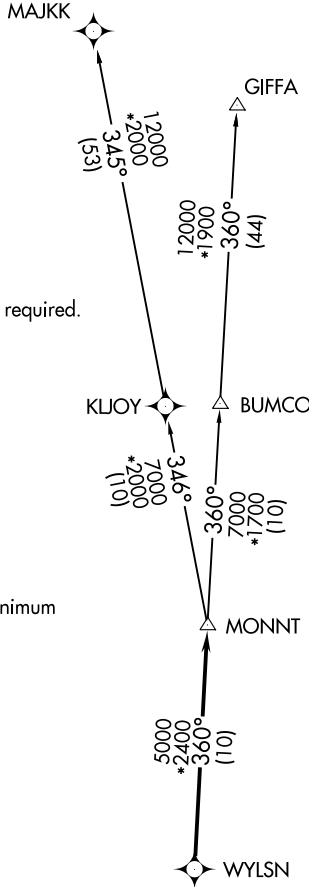
NOTE: RADAR required.  
 NOTE: DME/DME/IRU or GPS required.  
 NOTE: RNAV 1.

### TAKEOFF MINIMUMS

Rwy 18, 36: Standard with minimum  
 climb of 500' per NM to 680.



NOTE: Chart not to scale.



**TOP ALTITUDE:  
 ASSIGNED BY ATC**

**DEPARTURE ROUTE DESCRIPTION**

TAKEOFF RUNWAY 18: Climb on heading 175° to 680 for RADAR vectors to WYLSN, then...

TAKEOFF RUNWAY 36: Climb on heading 355° to 680 for RADAR vectors to WYLSN, then...

...on track 360° to MONNT, then on (transition).  
 Maintain ATC assigned altitude. Expect filed altitude 10 minutes after departure.

GIFFA TRANSITION (WYLSN8.GIFFA)  
MAJJK TRANSITION (WYLSN8.MAJJK)

SC-5, 28 NOV 2024 to 26 DEC 2024

SC-5, 28 NOV 2024 to 26 DEC 2024