

WAAS CH <b>58117</b> <b>W23A</b>	APP CRS <b>231°</b>	Rwy Idg <b>5000</b> TDZE <b>33</b> Apt Elev <b>34</b>
--	------------------------	---

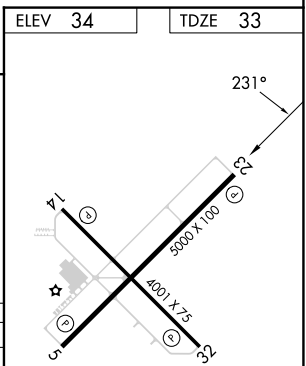
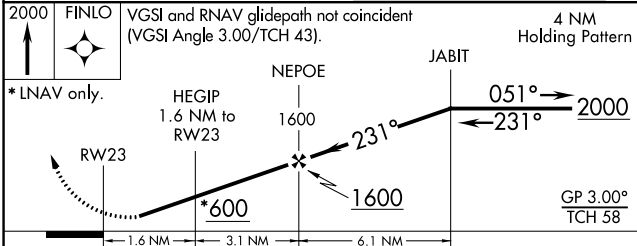
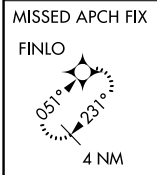
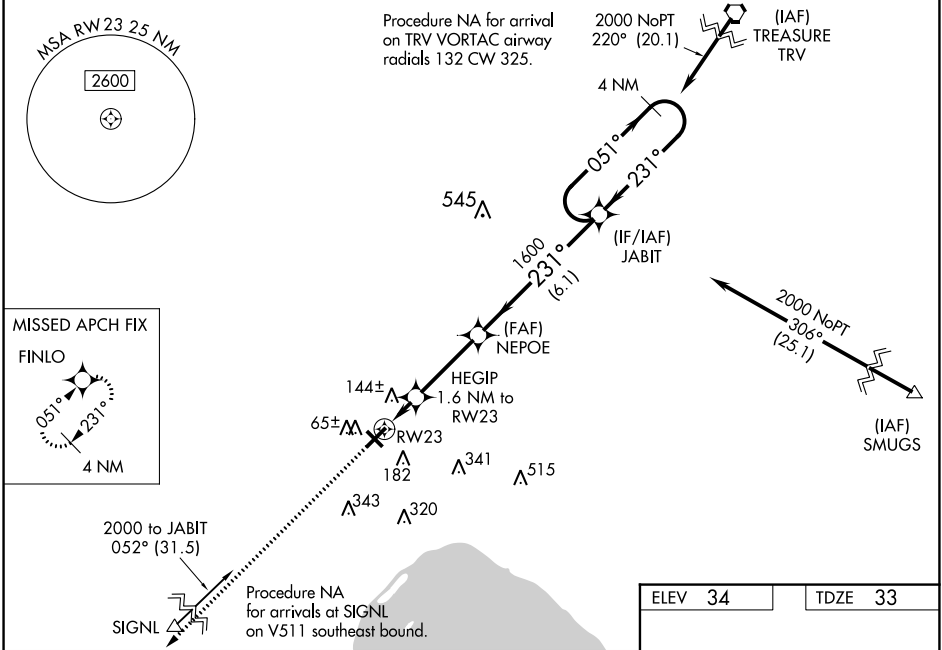
# RNAV (GPS) RWY 23

OKEECHOBEE COUNTY (OBE)

**⚠** Baro-VNAV NA when using Vero Beach altimeter setting. For uncompensated Baro-VNAV systems, LNAV/VNAV NA below -2°C (29°F) or above 43°C (109°F). DME/DME RNP-0.3 NA. Helicopter visibility reduction below 1 SM NA. When local altimeter setting not received, use Vero Beach altimeter setting: increase LPV DA to 392 feet and increase visibility all Cats ½ SM; increase LNAV/VNAV DA to 512 feet and increase visibility all Cats ¾ SM; increase all MDAs 80 feet and LNAV visibility Cats C and D ¾ SM and Circling visibility Cats C and D ¼ SM. Procedure NA at night.

**MISSED APPROACH:**  
Climb to 2000 direct FINLO and hold.

AWOS-3 <b>118.675</b>	MIAMI CENTER <b>132.25 370.9</b>	UNICOM <b>123.0 (CTAF)</b>
--------------------------	-------------------------------------	-------------------------------



CATEGORY	A	B	C	D
LPV DA		315-1	282 (300-1)	
LNAV/VNAV DA		435-1¼	402 (500-1¼)	
LNAV MDA		400-1	367 (400-1)	
CIRCLING	500-1	466 (500-1)	660-1¾ 626 (700-1¾)	660-2 626 (700-2)

MIRL Rwy 5-23

REIL Rwy 5 and 23

SE-3, 28 NOV 2024 to 26 DEC 2024

SE-3, 28 NOV 2024 to 26 DEC 2024