

APP CRS	Rwy Idg	5125
322°	TDZE	20
	Apt Elev	20

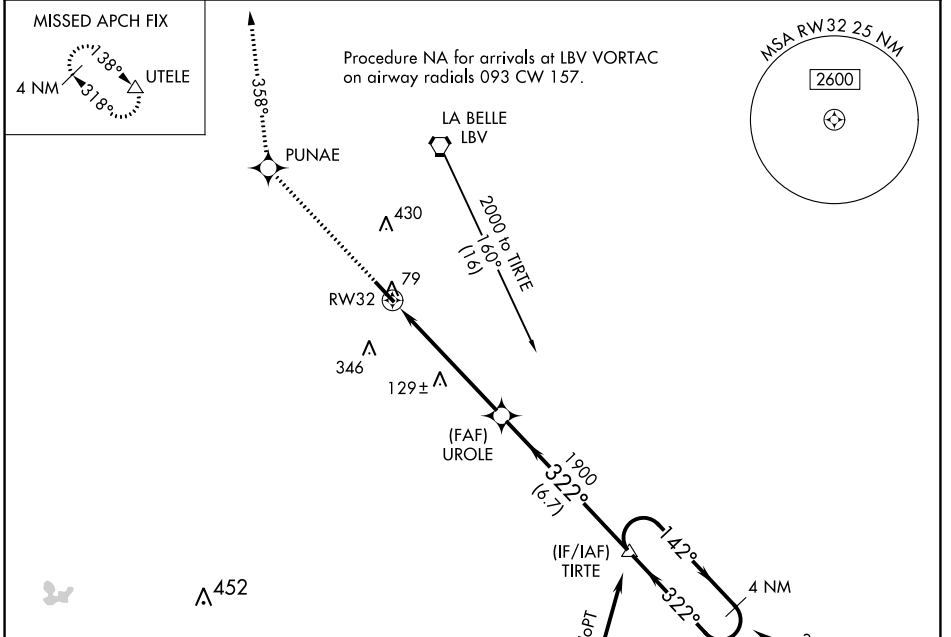
# RNAV (GPS) RWY 32

LA BELLE MUNI (X14)

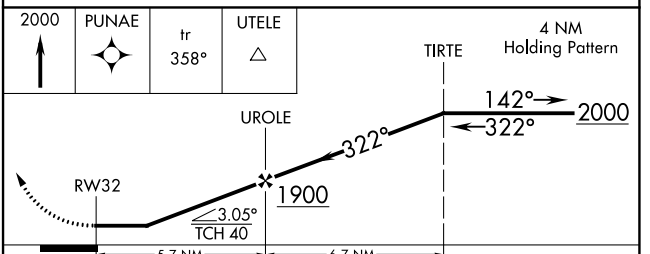
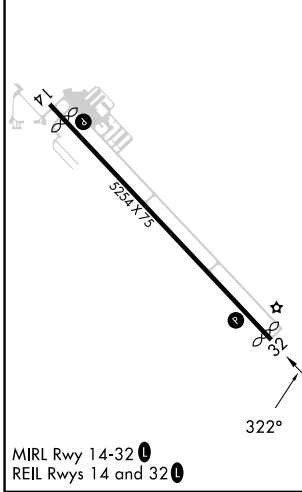
**NA** DME/DME RNP-0.3 NA. Helicopter visibility reduction below 3/4 SM NA. Use Southwest Florida Intl altimeter setting; when not received, use Page Fld altimeter setting and increase all MDAs 20 feet.

**MISSED APPROACH:** Climb to 2000 direct PUNAE then via 358° track to UTELE and hold.

RSW ASOS <b>124.65</b>	FORT MYERS APP CON <b>126.8</b>	UNICOM <b>122.8</b> (CTAF) <b>1</b>
---------------------------	------------------------------------	--



ELEV 20	<b>D</b>	TDZE 20
---------	----------	---------



CATEGORY	A	B	C	D
LNNAV MDA	480-1	460 (500-1)	480-1 1/4 460 (500-1 1/4)	480-1 1/2 460 (500-1 1/2)
CIRCLING	580-1	560 (600-1)	800-2 1/4 780 (800-2 1/4)	800-2 1/2 780 (800-2 1/2)

SE-3, 28 NOV 2024 to 26 DEC 2024

SE-3, 28 NOV 2024 to 26 DEC 2024