

APP CRS 244°	Rwy ldg TDZE Apt Elev	4000 574 574
------------------------	-----------------------------	---

RNAV (GPS) RWY 22

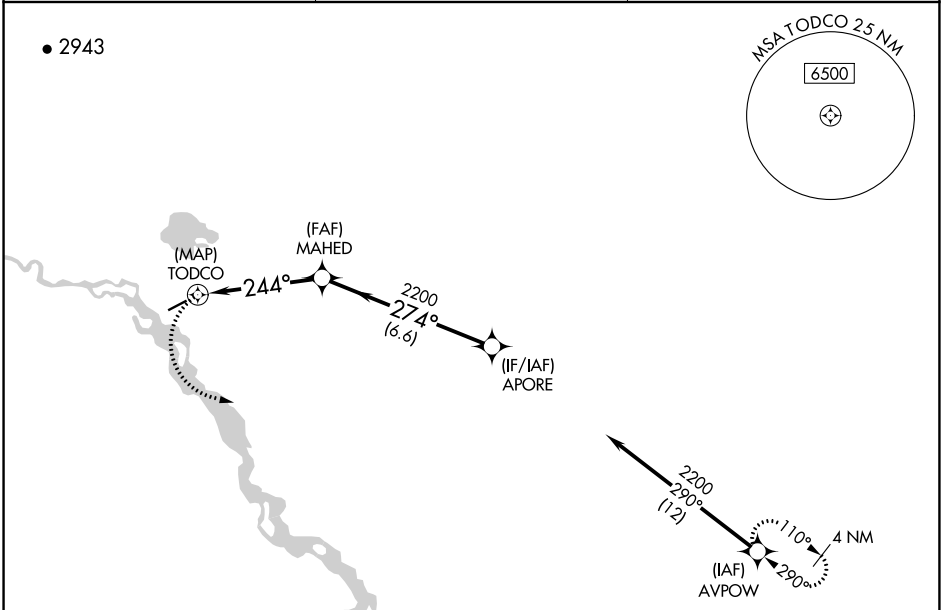
VENETIE (VEE) (PAVE)

RNP APCH-GPS.

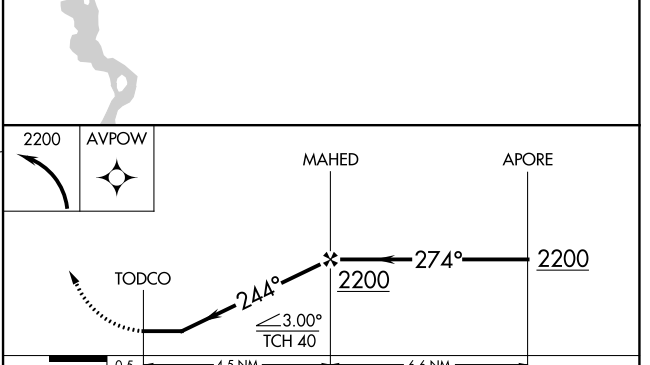
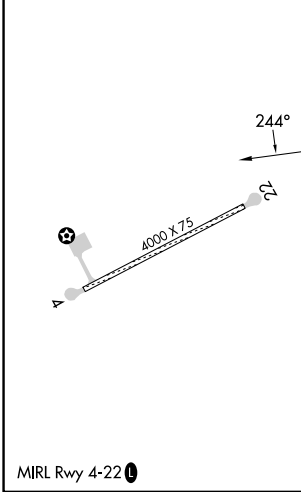
NA Rwy 22 helicopter visibility reduction below 1 SM NA. Use Fort Yukon altimeter setting. Procedure NA at night.

MISSED APPROACH: Climbing left turn to 2200, direct AVPOW and hold.

FYU/PFYU AWOS-3P 125.8	ANCHORAGE CENTER 135.0 225.4	CTAF 122.9
----------------------------------	--	----------------------



ELEV 574	TDZE 574
----------	----------



	0.5		4.5 NM		6.6 NM		
CATEGORY	A		B		C		D
LNAV MDA	1160-1 586 (600-1)		1160-1¾ 586 (600-1¾)		1180-1¾ 606 (700-1¾)		1260-2¼ 686 (700-2¼)
C CIRCLING	1180-1 606 (700-1)		1180-1¾ 606 (700-1¾)		1260-2¼ 686 (700-2¼)		

AK, 31 OCT 2024 to 26 DEC 2024

AK, 31 OCT 2024 to 26 DEC 2024