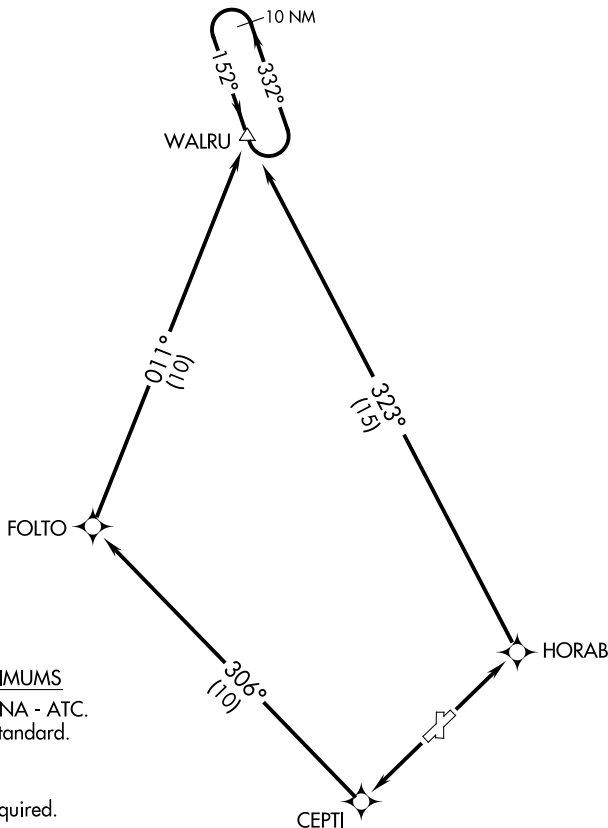


AWOS-3  
118.625  
DENVER CENTER  
126.5 371.85  
CTAF  
122.9



TAKEOFF MINIMUMS

Rwys 17, 35: NA - ATC.  
Rwys 4, 22: Standard.

NOTE: GPS required.  
NOTE: RNAV 1

TAKEOFF OBSTACLE NOTE

Rwy 22: Pole 570' from DER, 339' right of centerline, 58' AGL/8174' MSL.

NOTE: Chart not to scale.

DEPARTURE ROUTE DESCRIPTION

TAKEOFF RUNWAY 4: Climb to 14200 direct HORAB, then via 323° track to WALRU, thence. . . .

TAKEOFF RUNWAY 22: Climb to 14200 direct CEPTI, then via 306° track to FOLTO, then via 011° track to WALRU, thence. . . .

. . . continue climb in WALRU holding pattern until at or above MEA before proceeding on course.

SW-1, 28 NOV 2024 to 26 DEC 2024

SW-1, 28 NOV 2024 to 26 DEC 2024