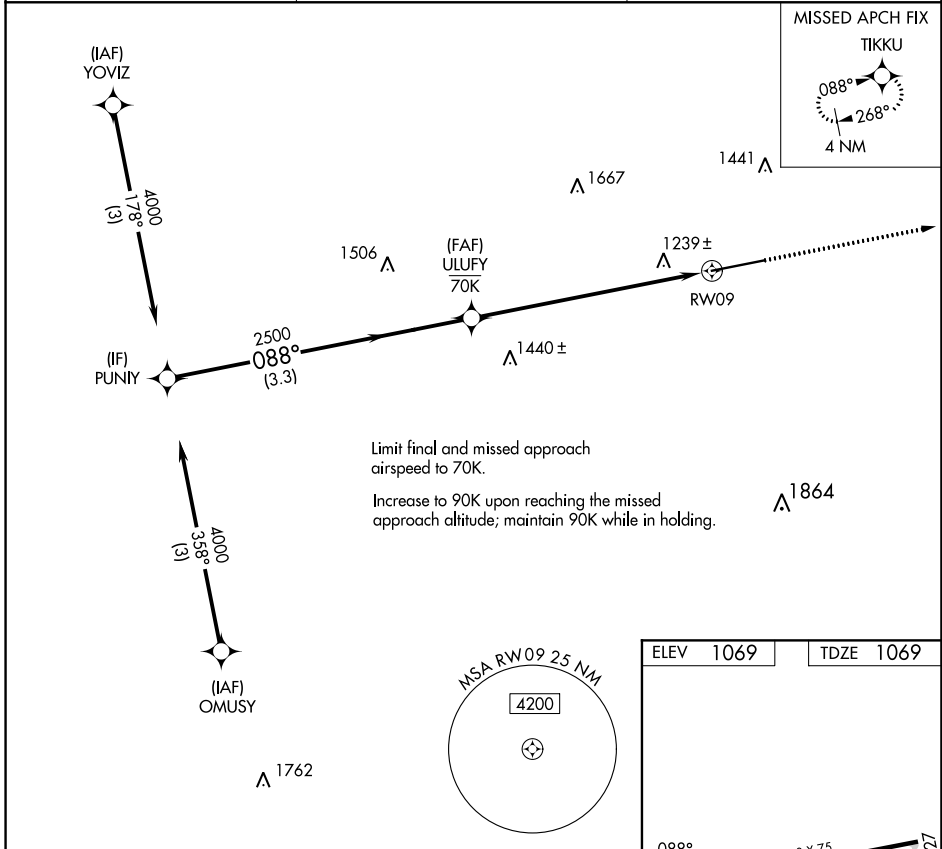


COPTER RNAV (GPS) Y RWY 9 GREENE COUNTY (WAY)

APP CRS	Rwy Idg	3500
088°	TDZE	1069
	Apt Elev	1069

RNP APCH - GPS.	MISSED APPROACH: Climb to 4000 direct TIKKU and hold, continue climb-in-hold to 4000.
NA Use Washington altimeter setting. Procedure NA at night.	

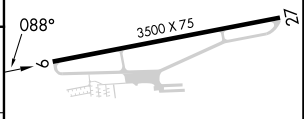
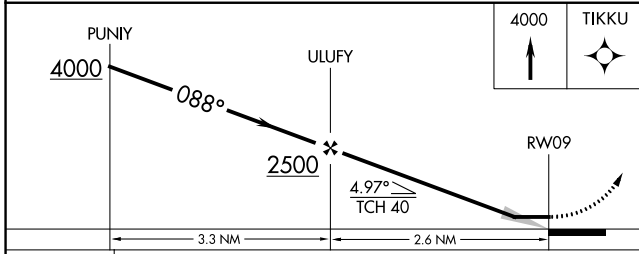
AFJ AWOS-3PT 119.175	CLARKSBURG APP CON* 121.15 284.65	UNICOM 122.8 (CTAF)
--------------------------------	---	-------------------------------



NE-4, 28 NOV 2024 to 26 DEC 2024

NE-4, 28 NOV 2024 to 26 DEC 2024

ELEV 1069	TDZE 1069
-----------	-----------



CATEGORY	COPTER	
LNAV MDA	1560-1	491 (500-1)