

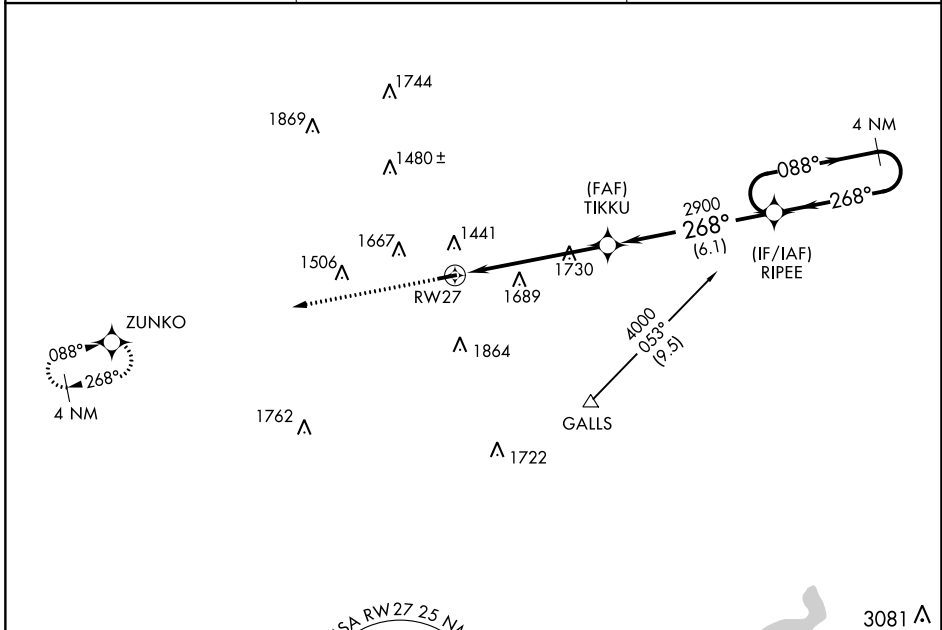
APP CRS	Rwy Idg	3500
268°	TDZE	1069
	Apt Elev	1069

RNAV (GPS) RWY 27

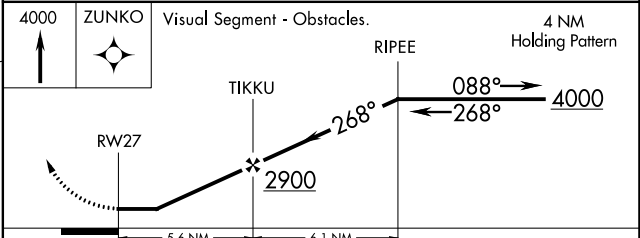
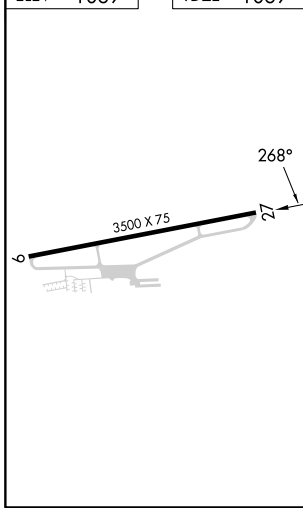
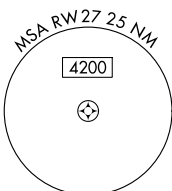
GREENE COUNTY (WAY)

RNP APCH - GPS.	<p>▼ Rwy 27 helicopter visibility reduction below 1 SM NA. Use Washington altimeter setting, when not received use Morgantown altimeter setting and increase all MDAs 20 feet. Procedure NA at night.</p> <p>▲ NA</p>	MISSED APPROACH: Climb to 4000 direct ZUNKO and hold.
-----------------	---	---

AFJ AWOS-3PT 119.175	CLARKSBURG APP CON* 121.15 284.65	UNICOM 122.8 (CTAF)
--------------------------------	---	-------------------------------



ELEV	1069	TDZE	1069
------	------	------	------



CATEGORY	A	B	C	D
LNNAV MDA	2100-1¼ 1031 (1100-1¼)	2100-1½ 1031 (1100-1½)	2100-3 1031 (1100-3)	NA
CIRCLING	2100-1¼ 1031 (1100-1¼)	2220-1½ 1151 (1200-1½)	2280-3 1211 (1300-3)	NA

NE-4, 28 NOV 2024 to 26 DEC 2024

NE-4, 28 NOV 2024 to 26 DEC 2024