

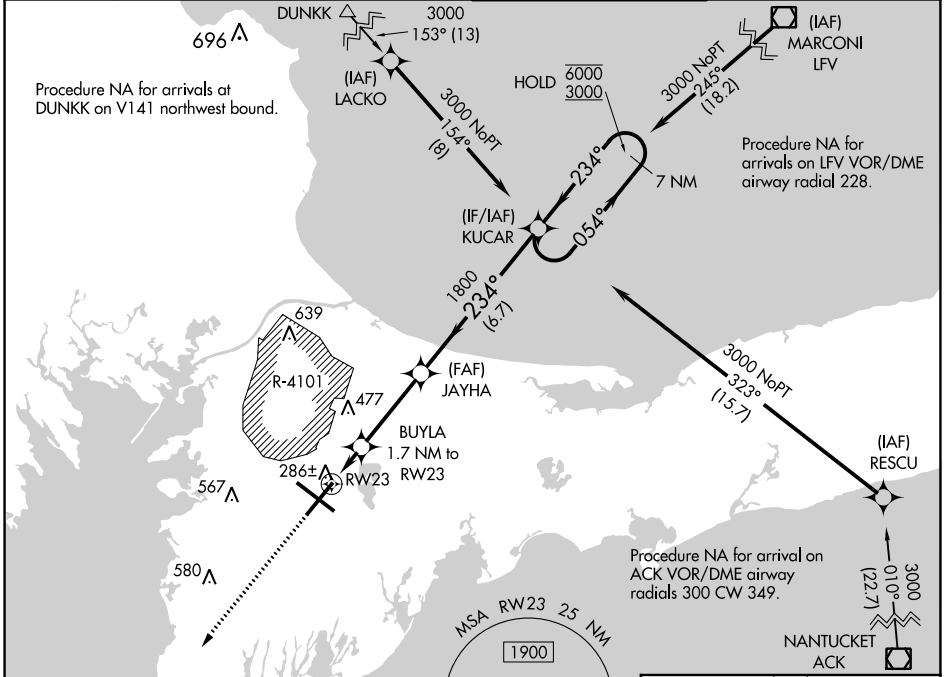
WAAS CH <b>97337</b> <b>W23A</b>	APP CRS <b>234°</b>	Rwy ldg TDZE Apt Elev	<b>8000</b> <b>126</b> <b>130</b>
--	------------------------	-----------------------------	---

# RNAV (GPS) RWY 23

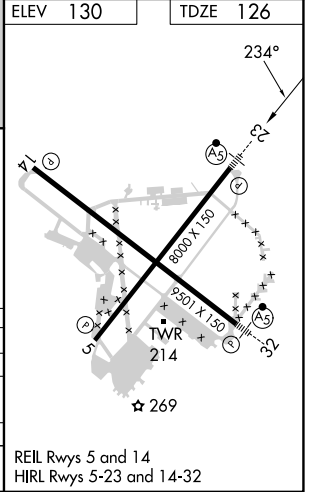
CAPE COD COAST GUARD AIR STATION (F'MH)

RNP APCH. <b>⚠</b> For uncompensated Baro-VNAV systems, procedure NA below -15°C or above 54°C. Circling NA NE of Rwy 14 and NW of Rwy 23. For inop ALS, increase LNAV/VNAV all Cats visibility to RVR 5500 and LNAV Cats C and D visibility to RVR 6000.	MALSR 	MISSED APPROACH: Climb to 3000 direct GLESO and hold.
--	-----------	--

ATIS <b>120.475 236.825</b>	BOSTON APP CON <b>118.2 284.6</b>	COAST GUARD TOWER <b>128.425 291.1</b>	GND CON <b>124.15 275.8</b>
--------------------------------	--------------------------------------	---	--------------------------------



  *LNAV only.  *1.1 NM to RWY 23  1.7 NM to RWY 23  1800  7 NM Holding Pattern 054° → 6000 ← 234° 3000 GP 3.00° TCH 54	ELEV 130		TDZE 126	
	 1.1 NM  0.6 NM  3.4 NM  6.7 NM			
CATEGORY	A	B	C	D
LPV DA	326/24 200 (200-½)			
LNAV/VNAV DA	467/30 341 (400-¾)			
LNAV MDA	540/24 414 (500-½)	540/40 414 (500-¾)		
CIRCLING	580-1 450 (500-1)	640-1 510 (600-1)	900-2¼ 770 (800-2¼)	900-2½ 770 (800-2½)



NE-1, 28 NOV 2024 to 26 DEC 2024

NE-1, 28 NOV 2024 to 26 DEC 2024