

WAAS CH 81837 W05A	APP CRS 054°	Rwy ldg TDZE Apt Elev	8000 117 130
--	------------------------	-----------------------------	---

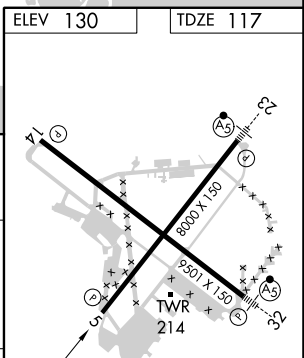
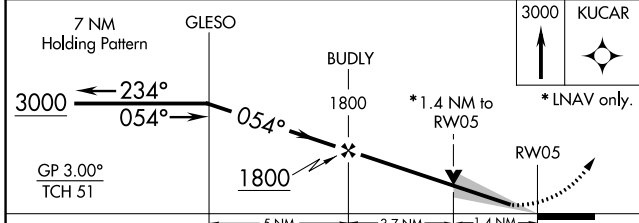
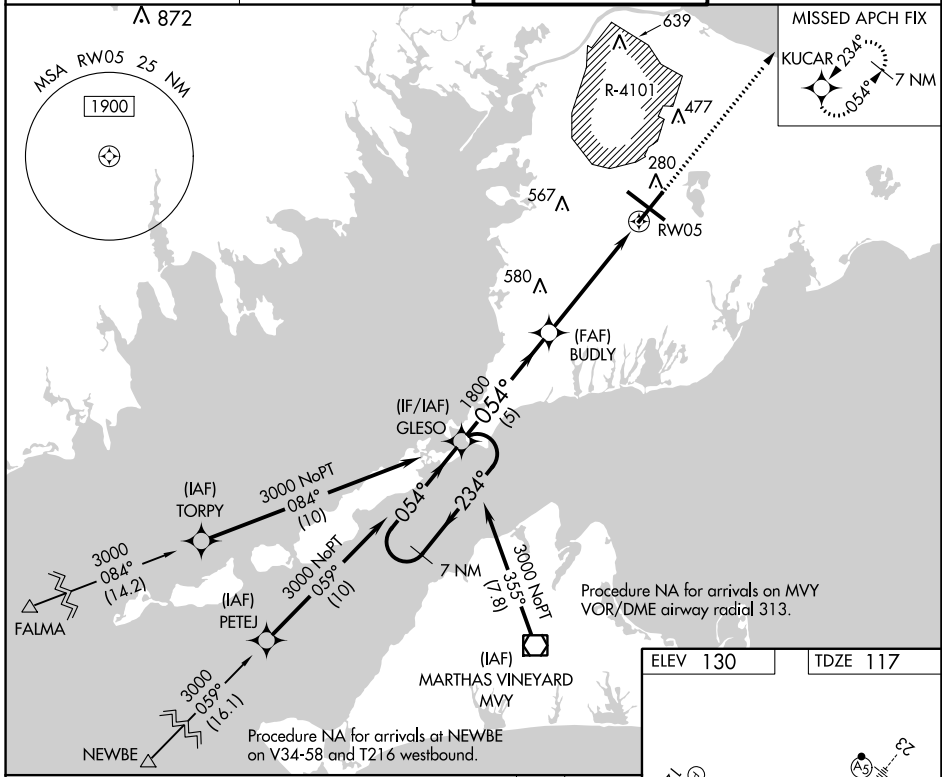
RNAV (GPS) RWY 5

CAPE COD COAST GUARD AIR STATION (FMH)

⚠ For uncompensated Baro-VNAV systems, LNAV/VNAV NA below -15°C (5°F) or above 54°C (130°F). DME/DME RNP-0.3 NA. Circling NA NE of Rwy 14 and NW of Rwy 23.

MISSED APPROACH: Climb to 3000 direct KUCAR and hold.

ATIS 120.475 236.825	BOSTON APP CON 118.2 284.6	COAST GUARD TOWER 128.425 291.1	GND CON 124.15 275.8
--------------------------------	--------------------------------------	---	--------------------------------



CATEGORY	A	B	C	D
LPV DA		317-3/4	200 (200-3/4)	
LNAV/DA VNAV		456-1 1/8	339 (400-1 1/8)	
LNAV MDA	540-1	423 (500-1)	540-1 1/4	423 (500-1 1/4)
CIRCLING	580-1 450 (500-1)	640-1 510 (600-1)	900-2 1/4 770 (800-2 1/4)	900-2 1/2 770 (800-2 1/2)

REIL Rwy 5 and 14
HIRL Rwy 5-23 and 14-32

NE-1, 28 NOV 2024 to 26 DEC 2024

NE-1, 28 NOV 2024 to 26 DEC 2024