

WAAS CH 58310 W30A	APP CRS 303°	Rwy ldg TDZE Apt Elev	4000 43 43
--	------------------------	-----------------------------	---------------------------------------

RNAV (GPS) RWY 30

QUINHAGAK (AQH) (PAQH)

RNP APCH - GPS.

⚠ For uncompensated Baro-VNAV systems, LNAV/VNAV NA below -25°C or above 54°C.

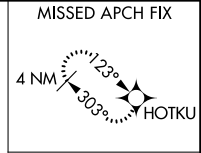
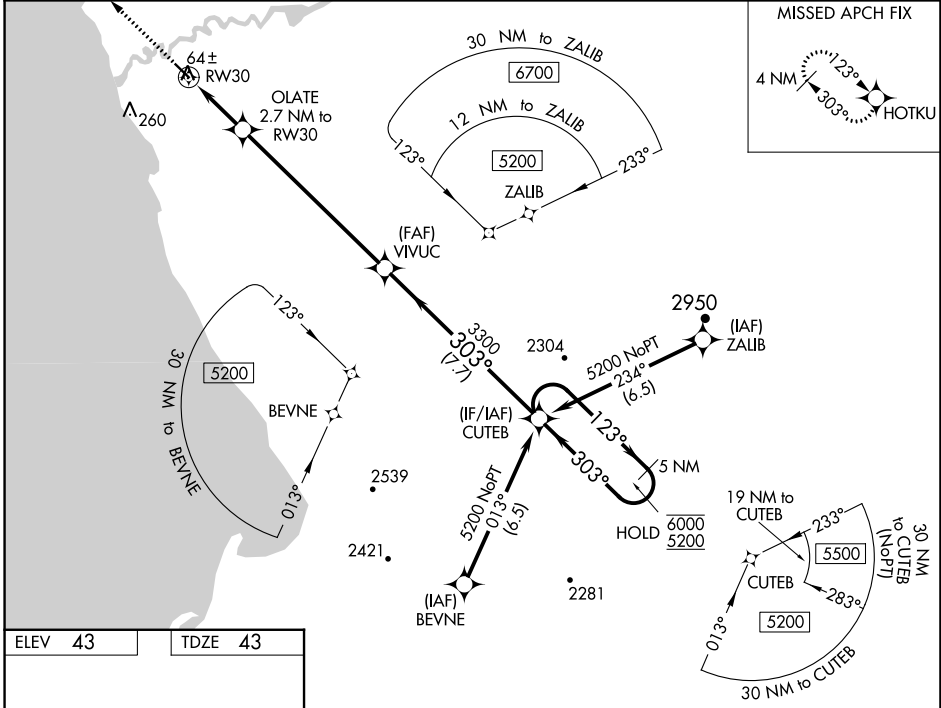
MISSED APPROACH: Climb to 2500 direct HOTKU and hold, continue climb-in-hold to 2500.

AWOS-3P
121.575

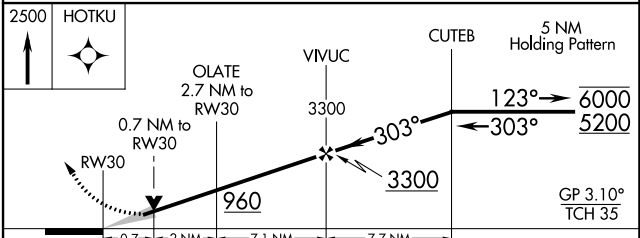
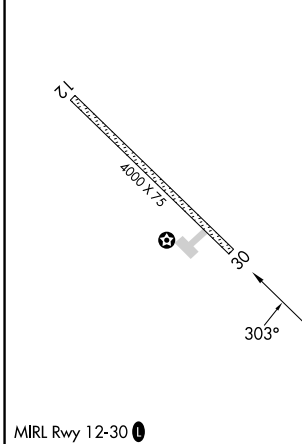
ANCHORAGE CENTER
125.2 372.0

KENAI RADIO
122.1

UNICOM
122.8 (CTAF) 0



ELEV 43	TDZE 43
---------	---------



CATEGORY	A	B	C	D
LPV DA		293-1	250 (300-1)	
LNAV/VNAV DA		293-1	250 (300-1)	
LNAV MDA		320-1	277 (300-1)	
C CIRCLING	400-1 357 (400-1)	500-1 457 (500-1)	580-1½ 537 (600-1½)	600-2 557 (600-2)

AK, 31 OCT 2024 to 26 DEC 2024

AK, 31 OCT 2024 to 26 DEC 2024