

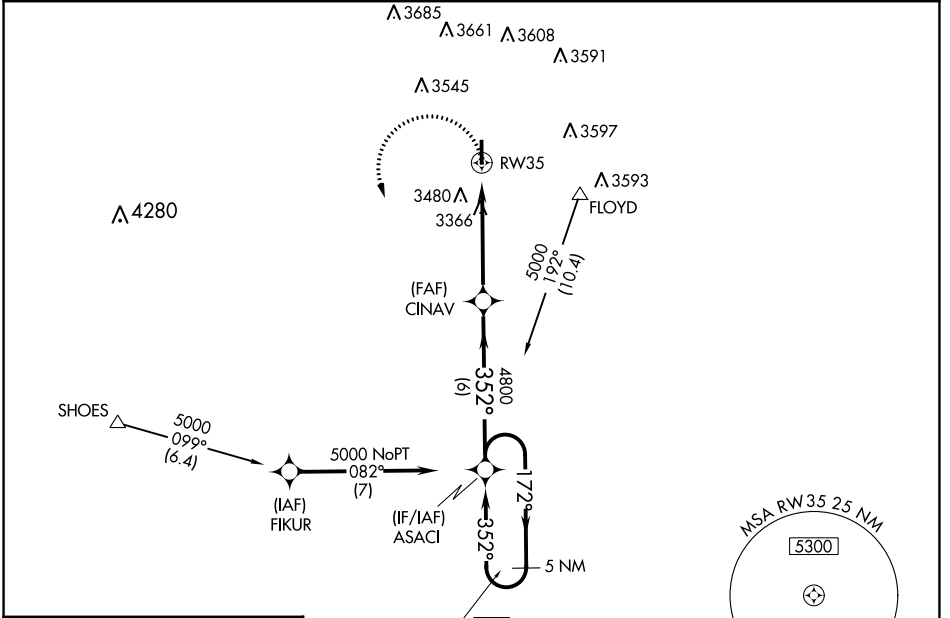
WAAS CH <b>82442</b> <b>W35A</b>	APP CRS <b>352°</b>	Rwy Idg <b>4600</b> TDZE <b>3187</b> Apt Elev <b>3187</b>
--	------------------------	---

# RNAV (GPS) RWY 35

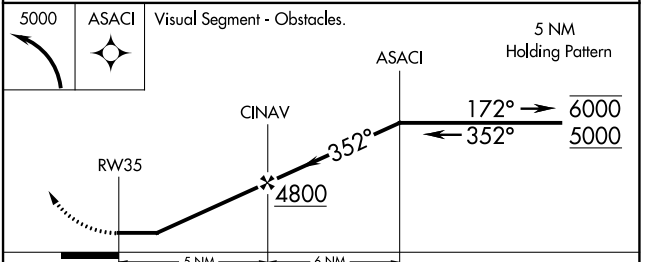
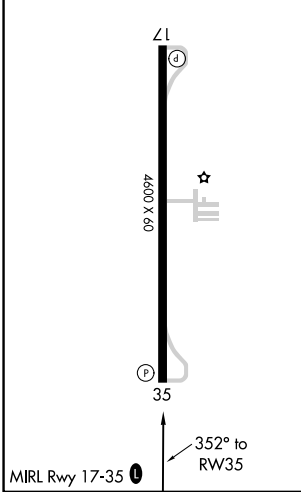
FLOYDADA MUNI (41F)

RNP APCH.	<p>▼ Rwy 35 helicopter visibility reduction below 3/4 SM NA. Use Plainview altimeter setting, when not received, use Lubbock altimeter setting and increase all MDA 20 feet; increase LP Cat C visibility 1/8 SM and Circling Cat C visibility 1/4 mile.</p> <p>▲ NA</p>	MISSED APPROACH: Climbing left turn to 5000 direct ASACI and hold.
-----------	--	--

PVW AWOS-3 <b>119.675</b>	LUBBOCK APP CON <b>119.2 351.8</b>	UNICOM <b>122.8 (CTAF) 0</b>
------------------------------	---------------------------------------	---------------------------------



ELEV 3187	TDZE 3187
-----------	-----------



CATEGORY	A	B	C	D
LP MDA	3760-1	573 (600-1)	3760-1 <sup>5</sup> / <sub>8</sub> 573 (600-1 <sup>5</sup> / <sub>8</sub> )	NA
LNAV MDA	3840-1	653 (700-1)	3840-1 <sup>7</sup> / <sub>8</sub> 653 (700-1 <sup>7</sup> / <sub>8</sub> )	NA
<b>C</b> CIRCLING	3840-1 653 (700-1)	3920-1 733 (800-1)	3980-2 <sup>1</sup> / <sub>4</sub> 793 (800-2 <sup>1</sup> / <sub>4</sub> )	NA

SC-2, 28 NOV 2024 to 26 DEC 2024

SC-2, 28 NOV 2024 to 26 DEC 2024