

RUSHVILLE, NEBRASKA

AL-10381 (FAA)

23278

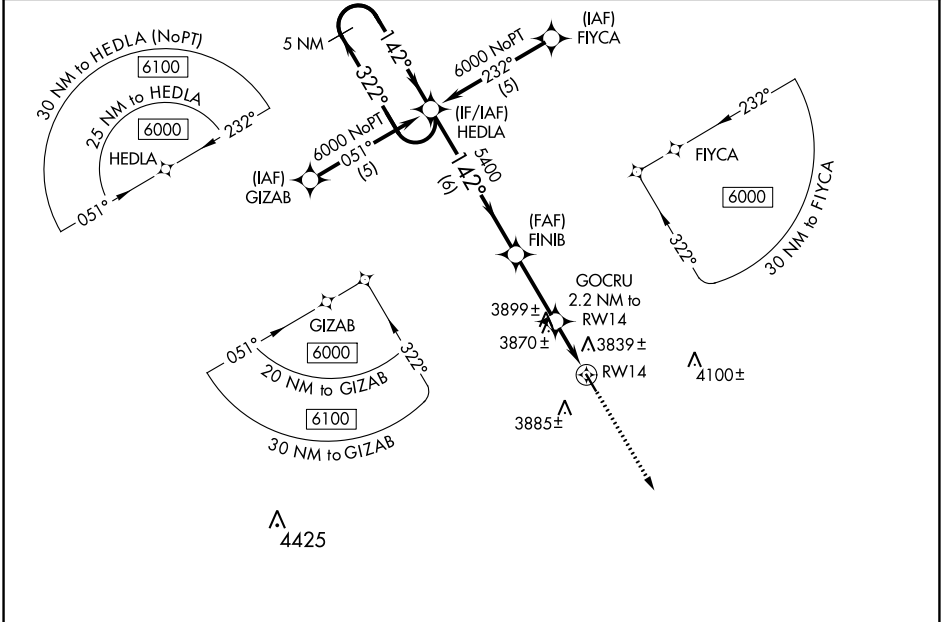
WAAS CH 72814 W14A	APP CRS 142°	Rwy ldg 3909 TDZE 3751 Apt Elev 3751
--	------------------------	---

RNAV (GPS) RWY 14

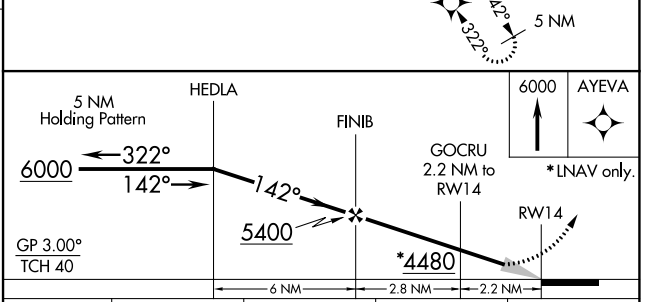
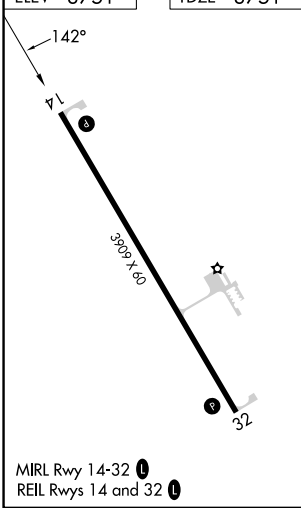
MODISSET (9V5)

RNP APCH - GPS.	MISSED APPROACH: Climb to 6000 direct AYEVA and hold.
NA Baro-VNAV NA. Use Pine Ridge altimeter setting.	

IEN ASOS 126.775	DENVER CENTER 127.95 338.2	CTAF 122.9
----------------------------	--------------------------------------	----------------------



ELEV 3751	TDZE 3751
-----------	-----------



CATEGORY	A	B	C	D
LPV DA	4117-1¼	366 (400-1¼)		NA
LNAV/VNAV DA	4279-2	528 (600-2)		NA
LNAV MDA	4300-1	549 (600-1)		NA
CIRCLING	4380-1 629 (700-1)	4420-1 669 (700-1)		NA

RUSHVILLE, NEBRASKA
Orig-A 06OCT22

42°44'N-102°27'W

RNAV (GPS) RWY 14

MODISSET (9V5)

NC-2, 28 NOV 2024 to 26 DEC 2024

NC-2, 28 NOV 2024 to 26 DEC 2024