

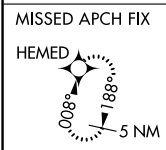
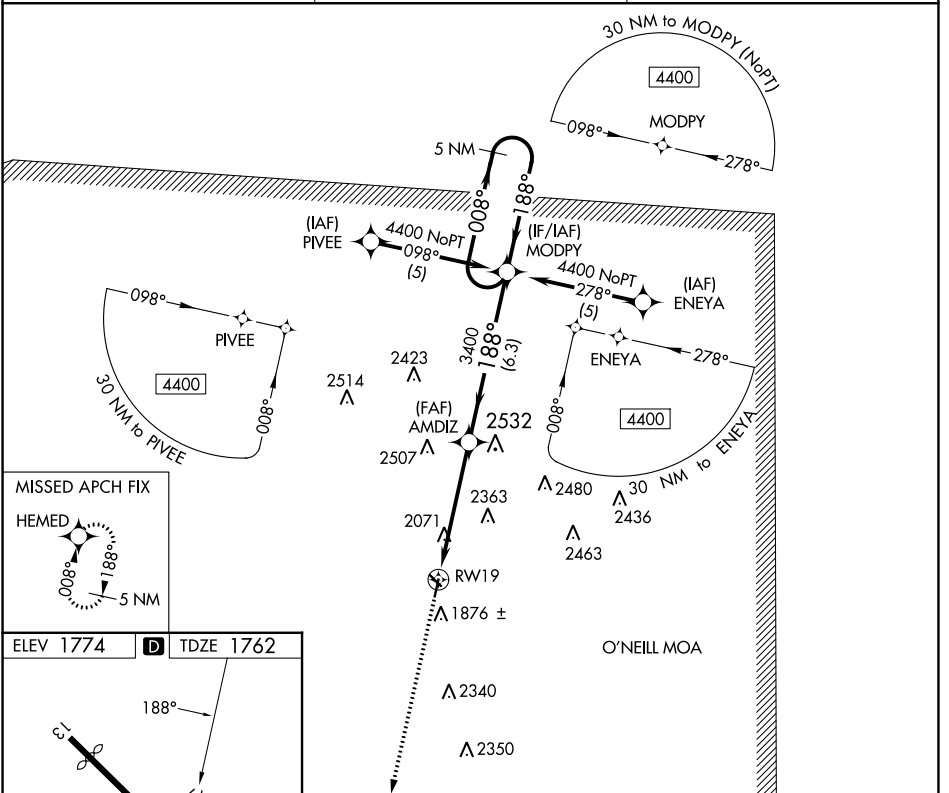
APP CRS	Rwy Idg	<b>3700</b>
<b>188°</b>	TDZE	<b>1762</b>
	Apt Elev	<b>1774</b>

# RNAV (GPS) RWY 19

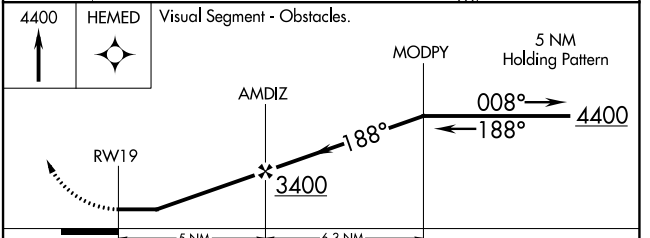
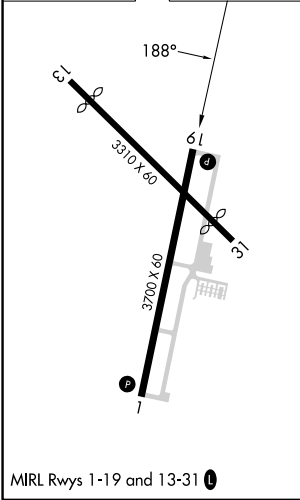
ANTELOPE COUNTY (4V9)

RNP APCH - GPS.	MISSED APPROACH: Climb to 4400 direct HEMED and hold.
<p>▼ Visibility reduction by helicopters NA. Use Albion altimeter setting, when not received, use Norfolk altimeter setting and increase all MDA 40 feet.</p> <p>▲ NA</p>	

AWOS-3PT <b>119.275</b>	MINNEAPOLIS CENTER <b>128.0 257.95</b>	UNICOM <b>122.8 (CTAF) 0</b>
----------------------------	---	---------------------------------



ELEV 1774	<b>D</b>	TDZE 1762
-----------	----------	-----------



CATEGORY	A	B	C	D
LNAV MDA	2380-1	618 (700-1)	NA	
<b>C</b> CIRCLING	2380-1 606 (700-1)	2440-1 666 (700-1)	NA	

NC-2, 28 NOV 2024 to 26 DEC 2024

NC-2, 28 NOV 2024 to 26 DEC 2024