

WAAS CH <b>69436</b> <b>W30A</b>	APP CRS <b>303°</b>	Rwy Idg TDZE Apt Elev	<b>3402</b> <b>2677</b> <b>2677</b>
--	------------------------	-----------------------------	---

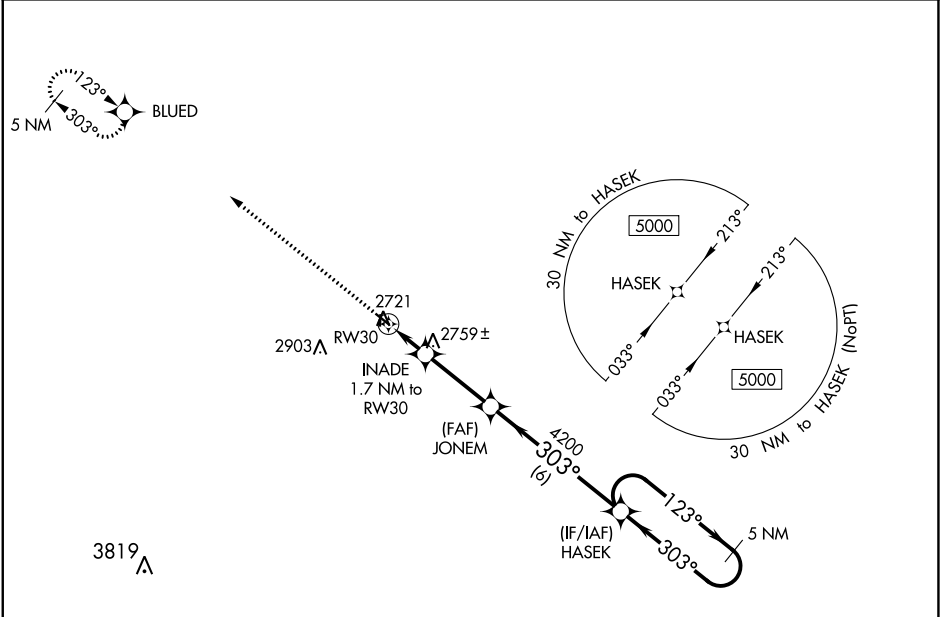
# RNAV (GPS) RWY 30

CURTIS MUNI (47V)

**NA** Baro-VNAV NA. Use Mc Cook altimeter setting; when not received, use North Platte altimeter setting and increase all DA 10 feet and all MDA 20 feet. DME/DME RNP-0.3 NA. Night landing: Rwy 17, 35 NA.

MISSED APPROACH: Climb to 5000 direct BLUED and hold.

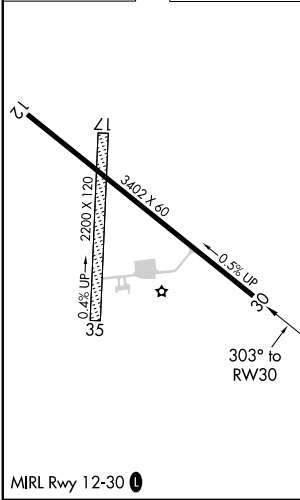
MCK ASOS <b>119.025</b>	DENVER CENTER <b>132.7 226.675</b>	CTAF <b>122.9</b>
----------------------------	---------------------------------------	----------------------



NC-2, 28 NOV 2024 to 26 DEC 2024

NC-2, 28 NOV 2024 to 26 DEC 2024

ELEV 2677	TDZE 2677
-----------	-----------



5000	BLUED	HASEK	5 NM Holding Pattern	
*LNAV only	INADE 1.7 NM to RWY30	JONEM 4200	GP 3.00° TCH 40	
	1.7 NM	3 NM	6 NM	
CATEGORY	A	B	C	D
LPV DA	3002-1½	325 (400-1½)		NA
LNAV/VNAV DA	3002-1½	325 (400-1½)		NA
LNAV MDA	3100-1	423 (500-1)		NA
<input checked="" type="checkbox"/> CIRCLING	3200-1 523 (600-1)	3380-1 703 (800-1)		NA