

WAAS CH 50326 W27A	APP CRS 278°	Rwy Idg TDZE Apt Elev	4001 660 660
--	------------------------	-----------------------------	---

RNAV (GPS) RWY 27

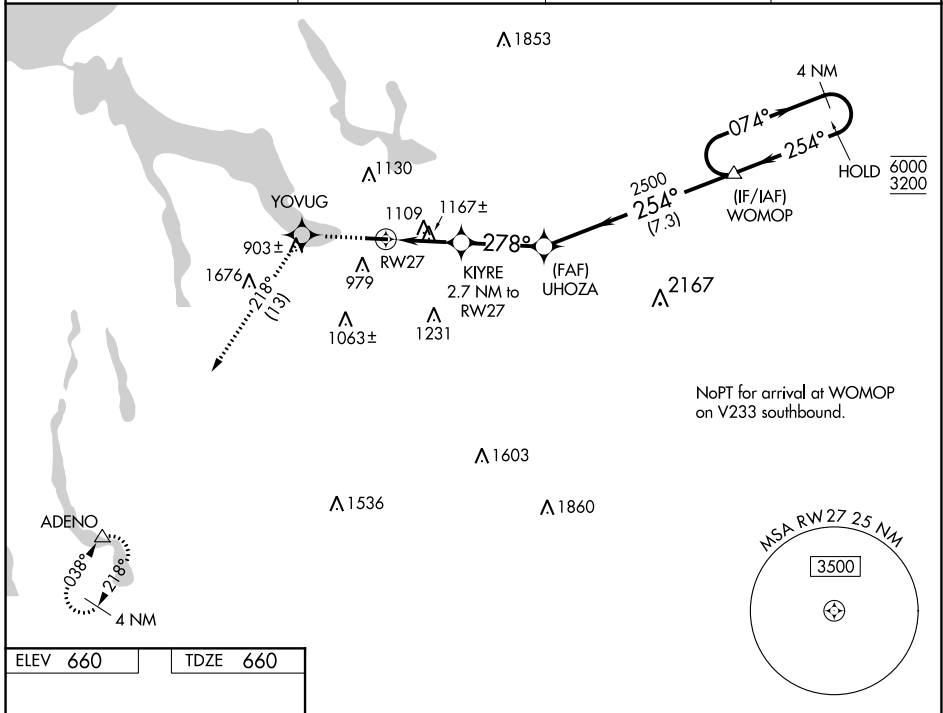
BOYNE CITY MUNI (N98)

RNP APCH.

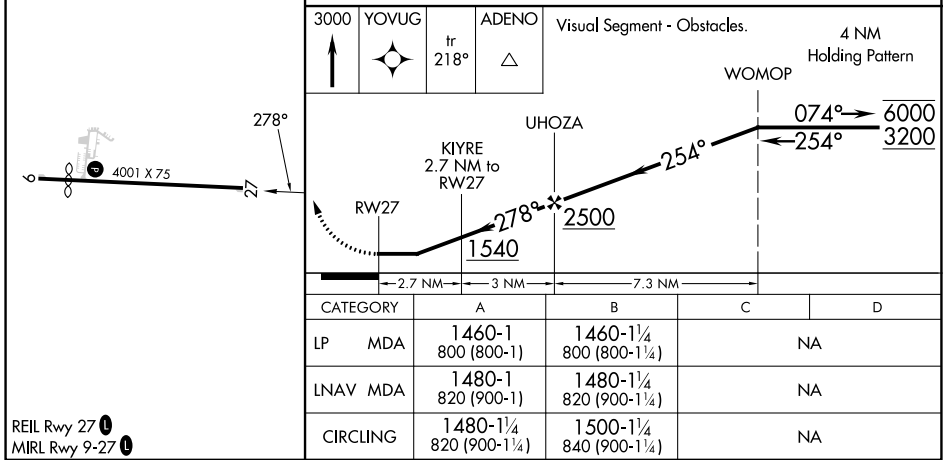
V Procedure NA at night. Rwy 27 helicopter visibility reduction below 1 SM NA. Use
NA Charlevoix altimeter setting, when not received, use Harbor Springs altimeter setting.

MISSED APPROACH: Climb to 3000 direct YOYUG and on track 218° to ADENO and hold.

CVX AWOS-3P 120.0	MINNEAPOLIS CENTER 134.6 354.05	UNICOM 122.8 (CTAF)	122.9
-----------------------------	---	-------------------------------	--------------



ELEV 660	TDZE 660
-----------------	-----------------



REIL Rwy 27 **1**
 MRL Rwy 9-27 **1**

BOYNE CITY, MICHIGAN
 Orig-D 20JUN19

45°13'N - 84°59'W

RNAV (GPS) RWY 27

EC-1, 28 NOV 2024 to 26 DEC 2024