

WAAS CH <b>49231</b> <b>W14A</b>	APP CRS <b>138°</b>	Rwy Idg <b>3401</b> TDZE <b>1206</b> Apt Elev <b>1206</b>
--	------------------------	---

# RNAV (GPS) RWY 14

ELBOW LAKE MUNI/PRIDE OF THE PRAIRIE (Y63)

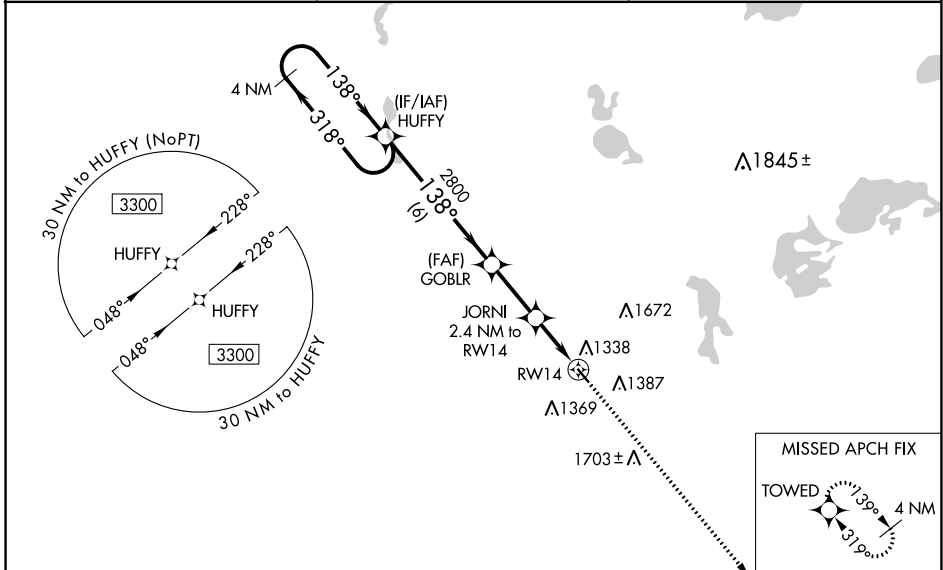
RNP APCH-GPS.

**⚠** Baro-VNAV NA when using Fergus Falls altimeter setting. For uncompensated Baro-VNAV systems LNAV/VNAV NA below -17°C or above 54°C. Circling NA northeast of Rwy 14-32.

**⚠** Procedure NA at night. Rwy 14 helicopter visibility reduction below ¼ SM NA. When local altimeter setting not received, use Fergus Falls altimeter setting: increase LPV DA to 1504 feet; increase LNAV/VNAV DA to 1605 feet and visibility all Cats ¼ mile; increase all MDAs 60 feet. Circling NA to Rwys 11W and 29W.

MISSED APPROACH:  
Climb to 3300 direct TOWED and hold.

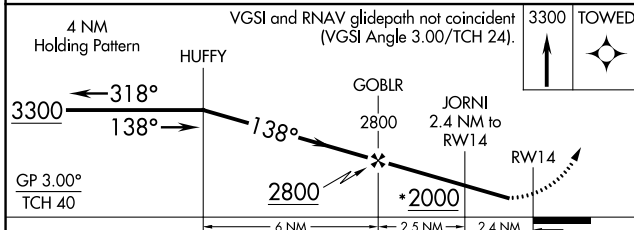
AWOS-3 <b>118.075</b>	MINNEAPOLIS CENTER <b>126.1 269.2</b>	CTAF <b>122.9</b>
--------------------------	--	----------------------



NC-1, 28 NOV 2024 to 26 DEC 2024

NC-1, 28 NOV 2024 to 26 DEC 2024

ELEV 1206	TDZE 1206
-----------	-----------



CATEGORY	A	B	C	D
LPV DA	1456-1	250 (300-1)		NA
LNAV/VNAV DA	1557-1½	351 (400-1½)		NA
LNAV MDA	1600-1	394 (400-1)		NA
CIRCLING	1600-1 394 (400-1)	1680-1 474 (500-1)		NA

