

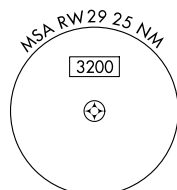
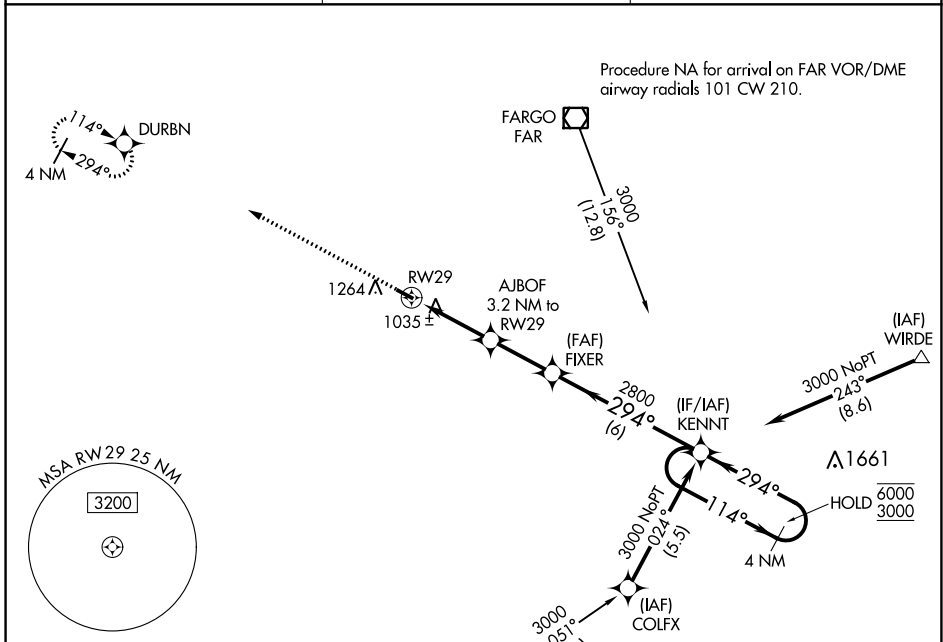
APP CRS	Rwy Idg	3300
294°	TDZE	947
	Apt Elev	947

RNAV (GPS) RWY 29

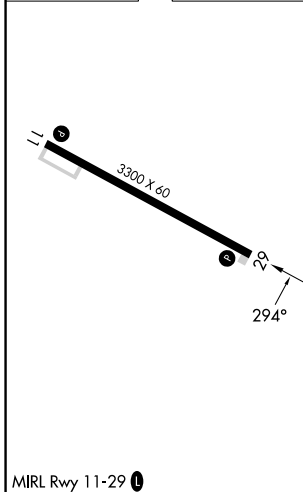
ROBERT ODEGAARD FLD (K74)

RNP APCH-GPS.	MISSED APPROACH: Climb to 3000 direct DURBN and hold.
<p>V Use Fargo altimeter setting, when not received, use Moorhead altimeter setting.</p> <p>A NA</p>	

FAR ASOS 124.5 379.2	FARGO APP CON 120.4 377.15	CTAF 122.9 0
--------------------------------	--------------------------------------	-------------------------------



ELEV 947	TDZE 947
----------	----------



3000	DURBN	VGSI and descent angles not coincident (VGSI Angle 3.00/TCH 25).	
		KENNT	4 NM Holding Pattern
	AJBOF 3.2 NM to RW29	FIXER	114° → 6000
			← 294° 3000
	RW29	2800	
	3.2 NM	2.5 NM	6 NM
CATEGORY	A	B	C
LNAV MDA	1400-1	453 (500-1)	NA
C CIRCLING	1680-1	733 (800-1)	NA

NC-1, 28 NOV 2024 to 26 DEC 2024

NC-1, 28 NOV 2024 to 26 DEC 2024