

WAAS CH <b>62833</b> <b>W33A</b>	APP CRS <b>330°</b>	Rwy Idg <b>3600</b> TDZE <b>1418</b> Apt Elev <b>1418</b>
--	------------------------	---

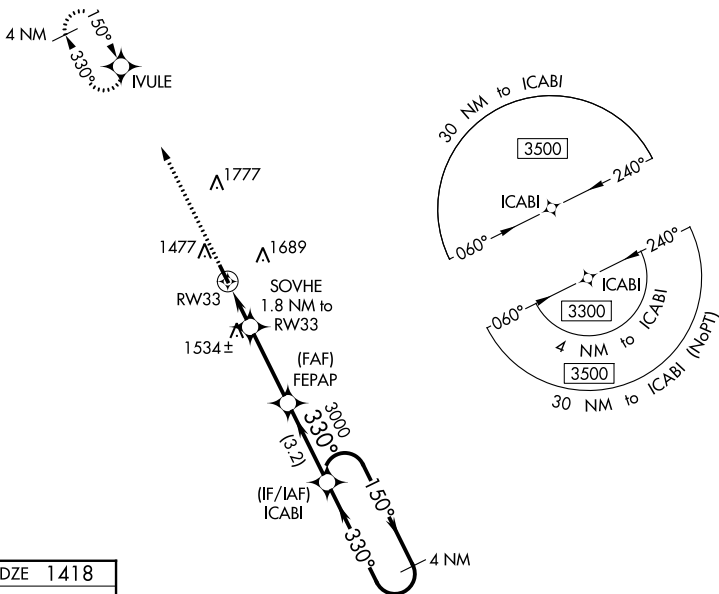
# RNAV (GPS) RWY 33

PARKSTON MUNI (8V3)

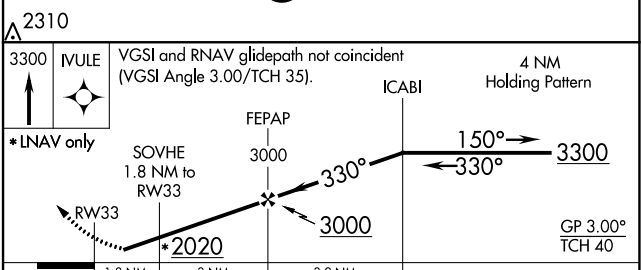
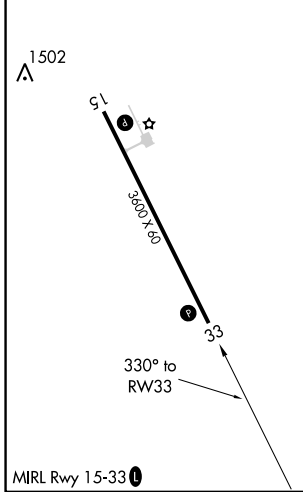
**NA** DME/DME RNP-0.3 NA. Use Mitchell altimeter setting; when not received, use Yankton altimeter setting and increase all DA 32 feet and all MDA 40 feet. Helicopter visibility reduction below  $\frac{3}{4}$  SM not authorized. Baro-VNAV NA.

MISSED APPROACH: Climb to 3300 direct IVULE and hold.

MHE ASOS <b>124.175</b>	MINNEAPOLIS CENTER <b>128.0 385.5</b>	AUNICOM <b>122.9 (CTAF) 1</b>
----------------------------	--	----------------------------------



ELEV 1418	TDZE 1418
-----------	-----------



CATEGORY	A	B	C	D
LPV DA	1740-1 $\frac{1}{8}$	322 (400-1 $\frac{1}{8}$ )		NA
LNAV/VNAV DA	1740-1 $\frac{1}{8}$	322 (400-1 $\frac{1}{8}$ )		NA
LNAV MDA	1860-1	442 (500-1)		NA
<b>C</b> CIRCLING	1980-1 562 (600-1)	2060-1 642 (700-1)		NA

NC-1, 28 NOV 2024 to 26 DEC 2024

NC-1, 28 NOV 2024 to 26 DEC 2024