

WAAS CH <b>49246</b> <b>W16A</b>	APP CRS <b>157°</b>	Rwy Idg TDZE Apt Elev	<b>3700</b> <b>1729</b> <b>1730</b>
--	------------------------	-----------------------------	---

# RNAV (GPS) RWY 16

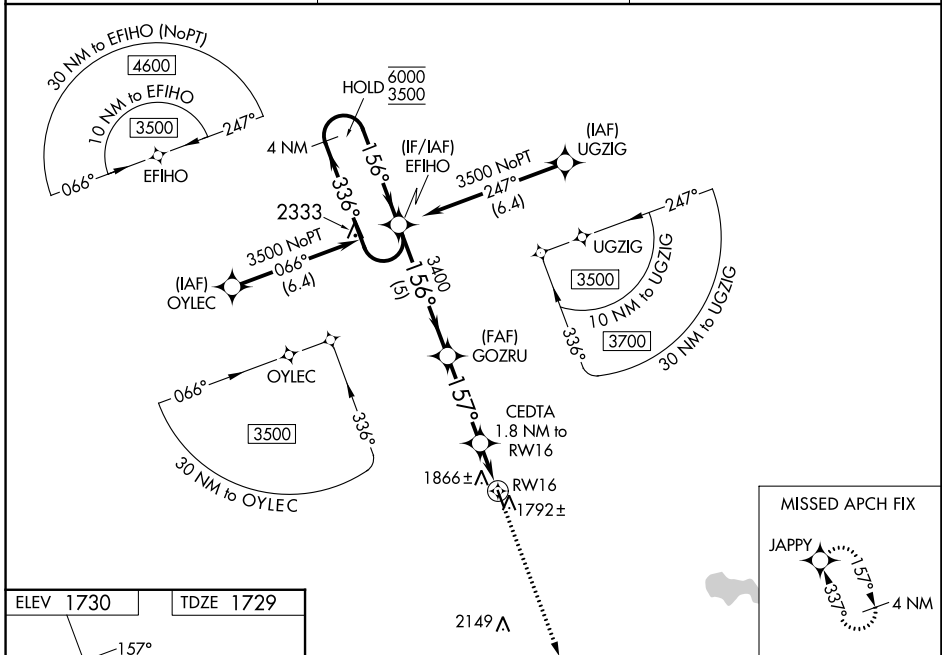
WILDER (6E5)

RNP APCH - GPS.

**⚠** For uncompensated Baro-VNAV systems, LNAV/VNAV NA below -18°C or above 54°C. Rwy 16 helicopter visibility reduction below 3/4 SM NA. Baro-VNAV and VDP NA when using MDS altimeter setting. When local altimeter setting not received, use MDS altimeter setting and increase LPV DA to 2055 feet; increase LNAV/VNAV DA to 2200 feet and all visibilities 1/2 SM. Increase all MDAs 80 feet.

MISSED APPROACH: Climb to 3600 direct JAPPY and hold.

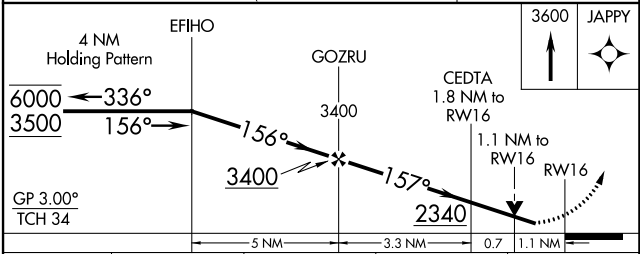
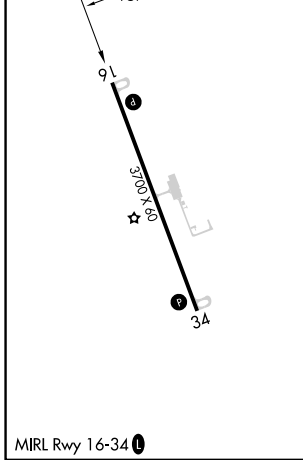
AWOS-3P <b>118.15</b>	MINNEAPOLIS CENTER <b>126.25 339.8</b>	CTAF <b>122.90</b>
--------------------------	---	-----------------------



NC-1, 28 NOV 2024 to 26 DEC 2024

NC-1, 28 NOV 2024 to 26 DEC 2024

ELEV 1730	TDZE 1729
-----------	-----------



CATEGORY	A	B	C	D
LPV DA	1979-1	250 (300-1)		NA
LNAV/VNAV DA	2120-1 1/8	391 (400-1 1/8)		NA
LNAV MDA	2120-1	391 (400-1)		NA
CIRCLING	2180-1 450 (500-1)	2220-1 490 (500-1)		NA