

WAAS CH 40048 W34A	APP CRS 337°	Rwy Idg 3700 TDZE 1730 Apt Elev 1730
--	------------------------	---

RNAV (GPS) RWY 34

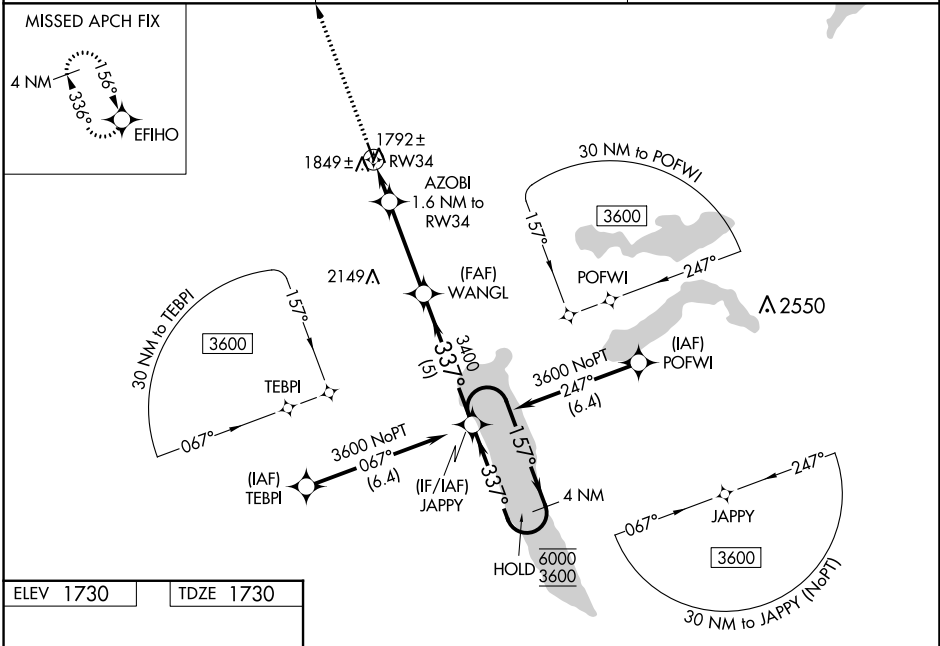
WILDER (6E5)

RNP APCH - GPS.

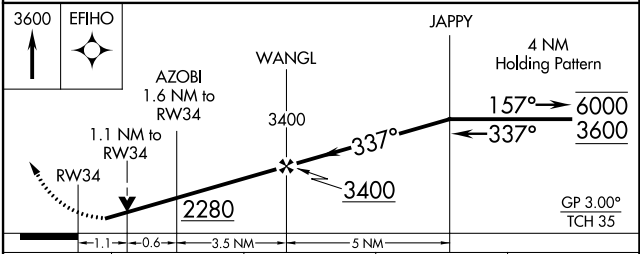
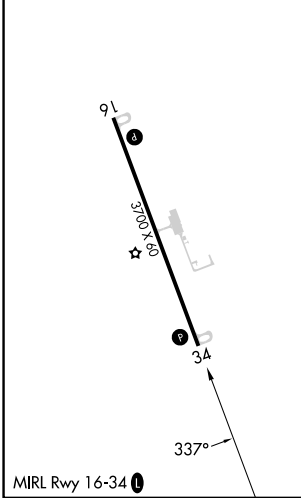
⚠ For uncompensated Baro-VNAV systems, LNAV/VNAV NA below -18°C or above 54°C.
⚠ Rwy 34 helicopter visibility reduction below 3/4 SM NA. Baro-VNAV and VDP NA when using MDS altimeter setting. When local altimeter setting not received, use MDS altimeter setting and increase LPV DA to 2056 feet; increase LNAV/VNAV DA to 2180 feet and all visibilities 3/4 SM. Increase all MDAs 80 feet.

MISSED APPROACH: Climb to 3600 direct EFIHO and hold.

AWOS-3P 118.15	MINNEAPOLIS CENTER 126.25 339.8	CTAF 122.90
--------------------------	---	-----------------------



ELEV 1730	TDZE 1730
-----------	-----------



CATEGORY	A	B	C	D
LPV DA	1980-1	250 (300-1)		NA
LNAV/VNAV DA	2100-1	370 (400-1)		NA
LNAV MDA	2100-1	370 (400-1)		NA
CIRCLING	2180-1 450 (500-1)	2220-1 490 (500-1)		NA

NC-1, 28 NOV 2024 to 26 DEC 2024

NC-1, 28 NOV 2024 to 26 DEC 2024