

WAAS CH <b>53334</b> <b>W09A</b>	APP CRS <b>090°</b>	Rwy Idg TDZE Apt Elev	<b>3500</b> <b>1478</b> <b>1478</b>
--	------------------------	-----------------------------	---

# RNAV (GPS) RWY 9

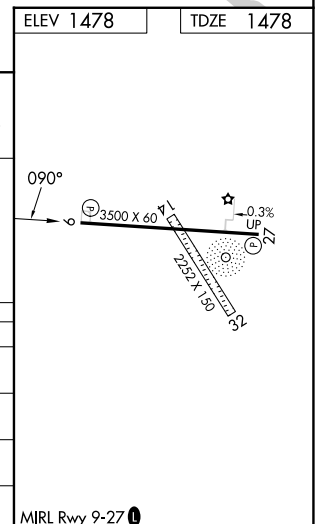
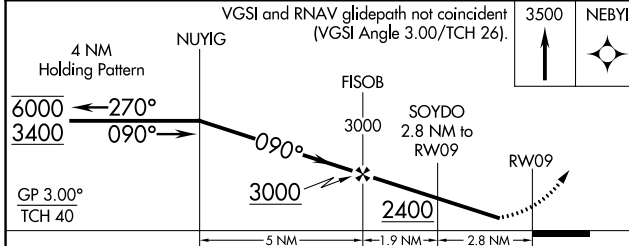
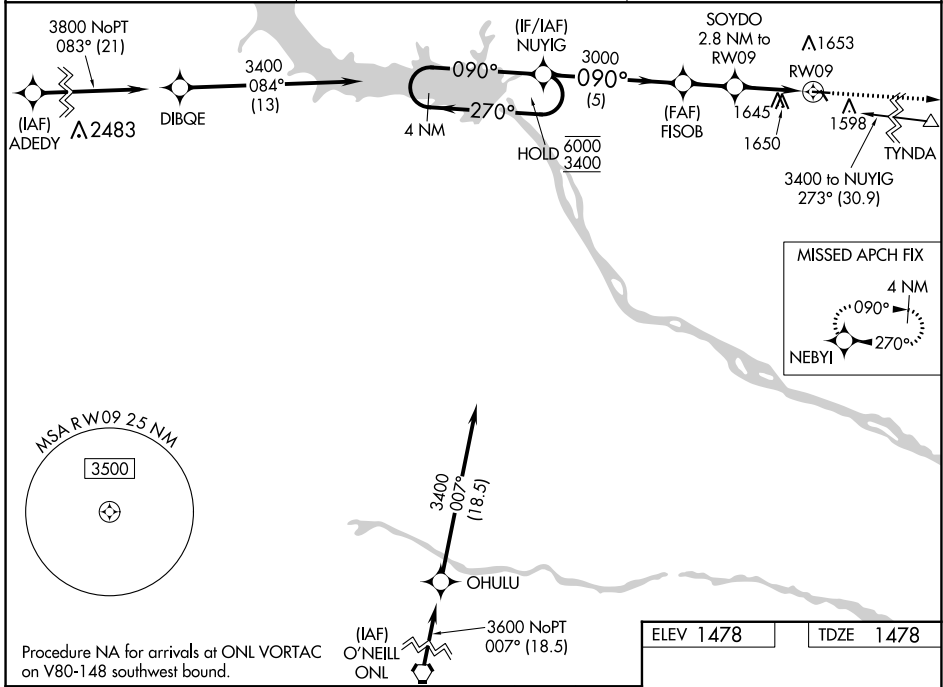
WAGNER MUNI (AGZ)

RNP APCH - GPS.

**NA** Circling NA to Rws 14 and 32. Baro-VNAV NA. Rwy 9 helicopter visibility reduction below ¼ SM NA. Use Yankton altimeter setting; when not received use O'Neill altimeter setting and increase all DAs 51 feet, all MDAs 60 feet and increase LPV all Cats visibility ⅓ SM, and LNAV/VNAV all Cats visibility ⅓ SM.

MISSED APPROACH: Climb to 3500 direct NEBY1 and hold.

YKN AWOS-3PT <b>119.05</b>	MINNEAPOLIS CENTER <b>128.0 257.95</b>	AUNICOM <b>122.8 (CTAF) 0</b>
-------------------------------	---	----------------------------------



CATEGORY	A	B	C	D
LPV DA	1847-1	369 (400-1)		NA
LNAV/VNAV DA	2053-1½	575 (600-1½)		NA
LNAV MDA	2020-1	542 (600-1)		NA
<b>C</b> CIRCLING	2080-1	602 (700-1)		NA

NC-1, 28 NOV 2024 to 26 DEC 2024

NC-1, 28 NOV 2024 to 26 DEC 2024