

APP CRS	Rwy Idg	3500
160°	TDZE	1481
	Apt Elev	1482

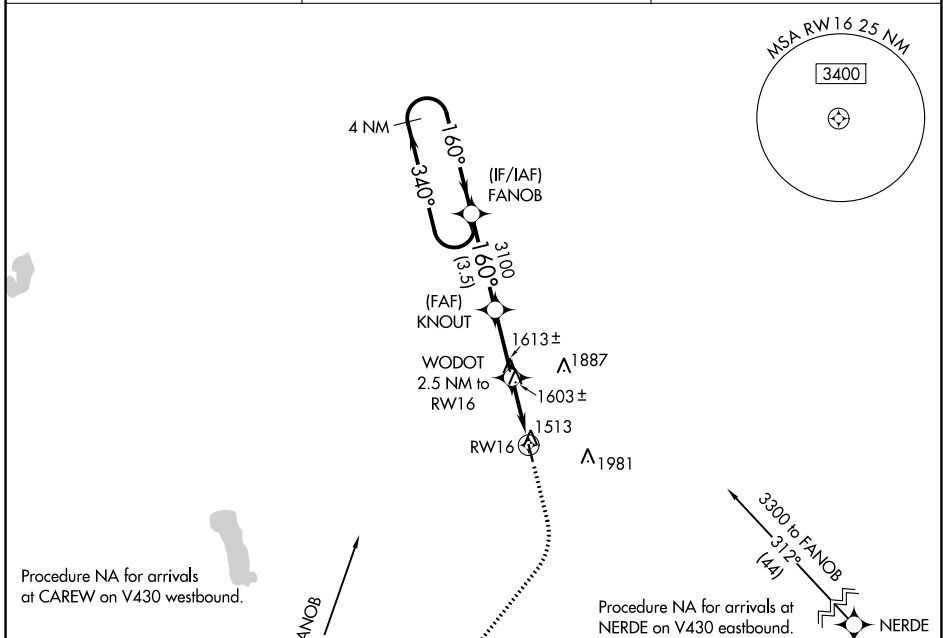
RNAV (GPS) RWY 16

CANDO MUNI (9D7)

NA When local altimeter setting not received, use Devils Lake altimeter setting and increase all MDAs 80 feet. DME/DME RNP-0.3 NA. VDP NA with Devils Lake altimeter setting. Helicopter visibility reduction below 3/4 SM NA.

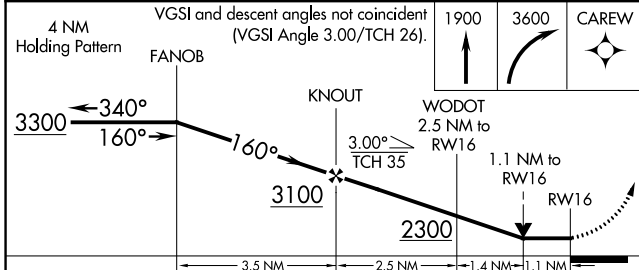
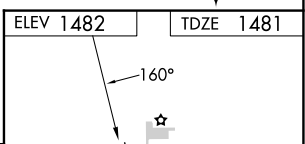
MISSED APPROACH: Climb to 1900 then climbing right turn to 3600 direct CAREW and hold.

AWOS-3 118.325	MINNEAPOLIS CENTER 124.2 270.3	CTAF 122.9 0
--------------------------	------------------------------------------	-------------------------------



NC-1, 28 NOV 2024 to 26 DEC 2024

NC-1, 28 NOV 2024 to 26 DEC 2024



CATEGORY	A	B	C	D
LNVA MDA	1860-1	379 (400-1)		NA
CIRCLING	1900-1 418 (500-1)	1940-1 458 (500-1)		NA

