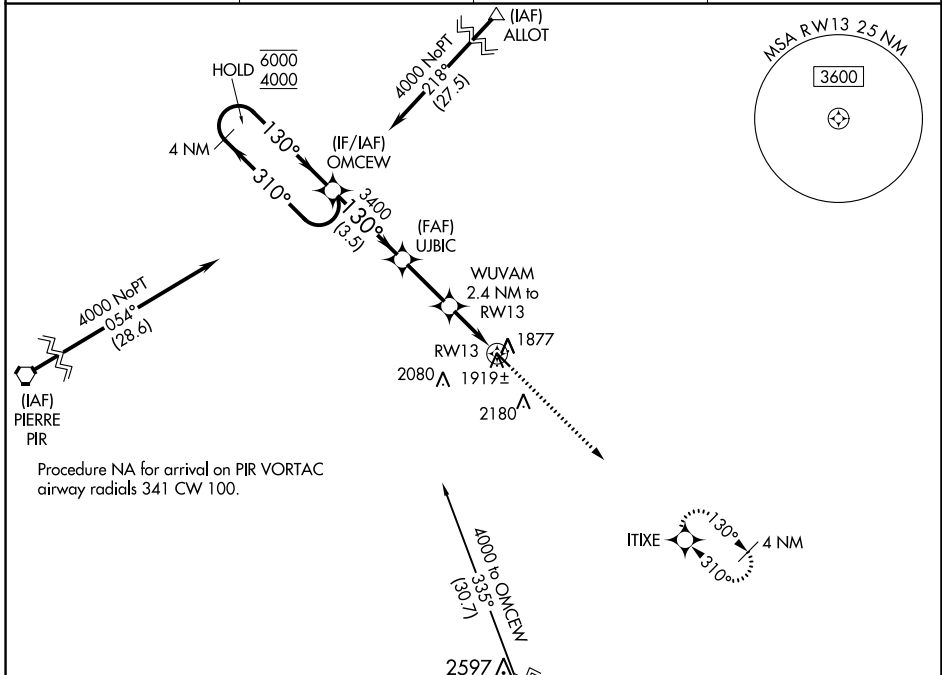


| | | | |
|--|------------------------|-----------------------------|---|
| WAAS CH 72839 W13A | APP CRS 130° | Rwy ldg TDZE Apt Elev | 3701 1852 1854 |
|--|------------------------|-----------------------------|---|

RNAV (GPS) RWY 13

HIGHMORE MUNI (9D \emptyset)

| | | | |
|---|----------------------------|---|----------------------|
| RNP APCH. | | MISSED APPROACH: Climb to 4000 direct ITIXE and hold. | |
| <p>▼ Baro-VNAV NA. Use Onida altimeter setting; when not received, use Pierre altimeter setting and increase LPV and LNAV/VNAV DA to 2226 and all MDAs 40 feet.</p> <p>▲ NA</p> | | | |
| PIR ASOS 119.025 | 98D AWOS-2 122.9 | MINNEAPOLIS CENTER 125.1 269.1 | CTAF 122.9 |



Procedure NA for arrival on PIR VORTAC airway radials 341 CW 100.

| | | | | | |
|--|-----------------------|--|---|--|--|
| 4 NM Holding Pattern | | OMCEW | | 4000 ITIXE | |
| <p>6000 ← 310°</p> <p>4000 ← 130°</p> <p>GP 3.00° TCH 40</p> | | <p>UJBIC 3400</p> <p>WUVAM 2.4 NM to RWY13</p> <p>RWY13</p> <p>*2640</p> | | <p>*LNAV only</p> <p>130° to RWY13</p> <p>0.4% LP</p> <p>3701 X 60</p> | |
| 3.5 NM | | 2.4 NM | | 2.4 NM | |
| CATEGORY | A | B | C | D | |
| LPV DA | 2192-1½ | 340 (400-1½) | | NA | |
| LNAV/VNAV DA | 2192-1½ | 340 (400-1½) | | NA | |
| LNAV MDA | 2260-1 | 408 (500-1) | | NA | |
| C CIRCLING | 2460-1 606 (700-1) | 2600-1 746 (800-1) | | NA | |

MIRL Rwy 13-31

NC-1, 28 NOV 2024 to 26 DEC 2024

NC-1, 28 NOV 2024 to 26 DEC 2024