

APP CRS <b>071°</b>	Rwy Idg TDZE Apt Elev	<b>N/A</b> <b>N/A</b> <b>8207</b>
------------------------	-----------------------------	---

# RNAV (GPS)-C

GRANBY-GRAND COUNTY (GNB)

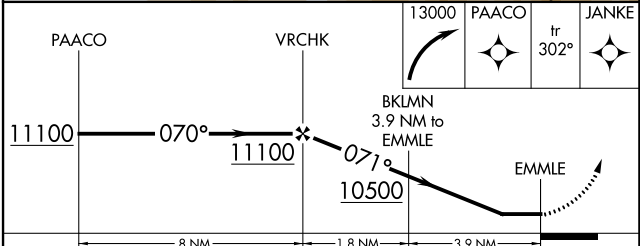
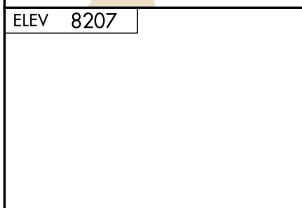
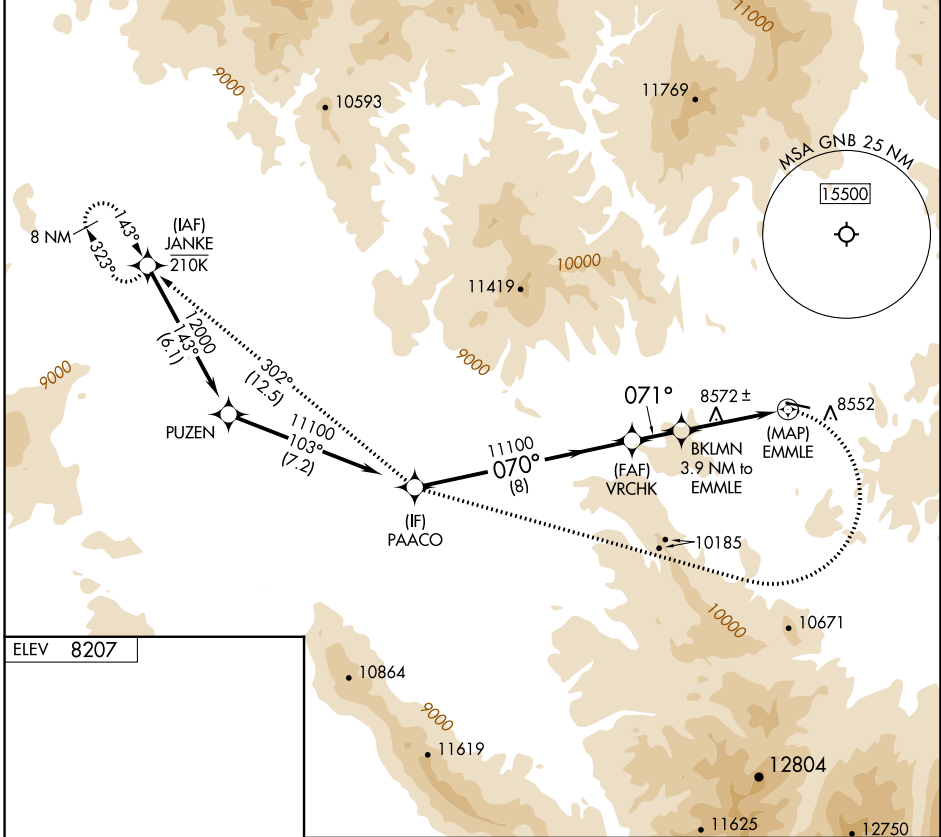
RNP APCH - GPS.

**⚠** Procedure NA at night. Rwy 27 helicopter visibility reduction below 1 SM NA.

**❄** -24°C

MISSED APPROACH: (Do not exceed 165K until PAACO)  
Immediate climbing right turn to 13000 direct PAACO  
and on track 302° to JANKE and hold.

AWOS-3PT <b>119.925</b>	DENVER CENTER <b>128.65 282.2</b>	UNICOM <b>123.0 (CTAF) 0</b>
----------------------------	--------------------------------------	---------------------------------



CATEGORY	A	B	C	D
<b>C</b> CIRCLING	10180-1¼ 1973 (2000-1¼)	10180-1½ 1973 (2000-1½)	10180-3 1973 (2000-3)	NA

SW-1, 28 NOV 2024 to 26 DEC 2024

SW-1, 28 NOV 2024 to 26 DEC 2024