

APP CRS	Rwy Idg	N/A
214°	TDZE	N/A
	Apt Elev	526

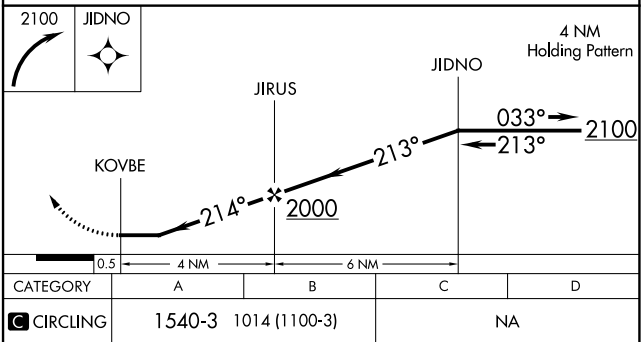
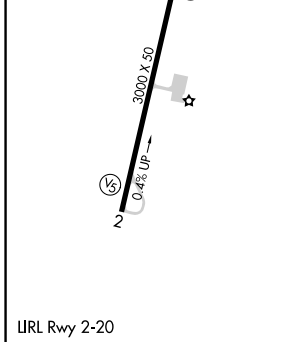
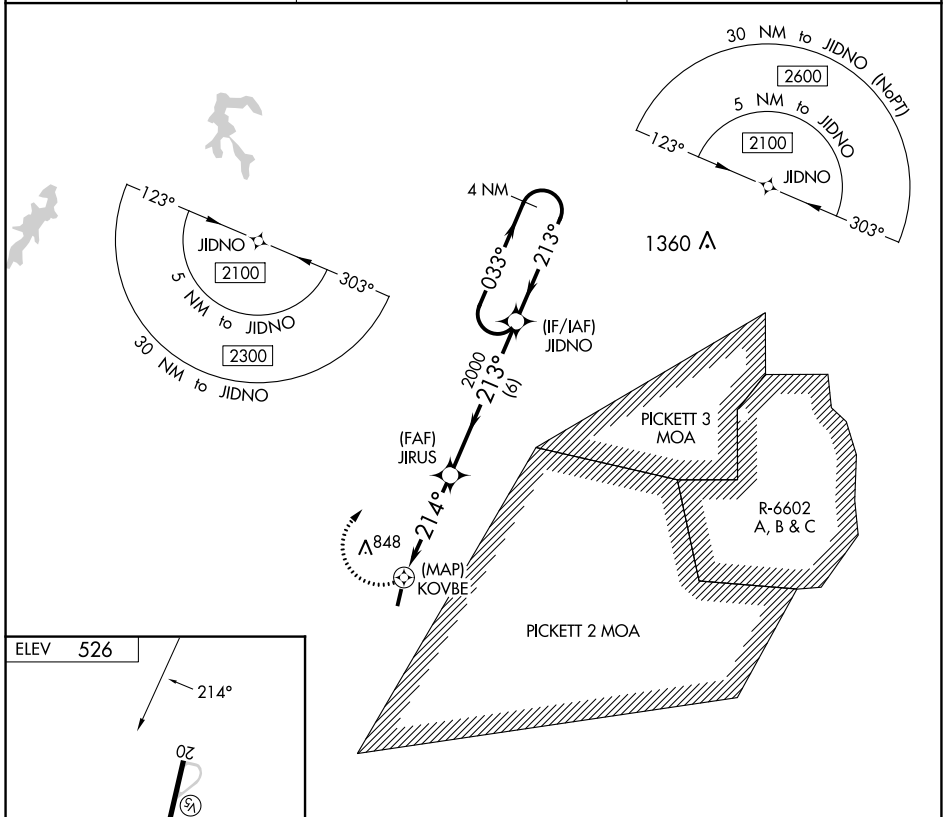
# RNAV (GPS)-B

LUNENBURG COUNTY (W31)

**⚠** Helicopter visibility reduction below 1 SM NA. DME/DME RNP-0.3 NA. Procedure NA at night. When local altimeter setting not received, use Blackstone altimeter setting and increase all MDA 60 feet.

**⚠** MISSED APPROACH: Climbing right turn to 2100 direct JIDNO and hold.

AWOS-3 <b>123.875</b>	WASHINGTON CENTER <b>118.75 377.1</b>	UNICOM <b>122.7</b> (CTAF)
--------------------------	--	-------------------------------



CATEGORY	A	B	C	D
<b>C</b> CIRCLING	1540-3	1014 (1100-3)	NA	

NE-3, 28 NOV 2024 to 26 DEC 2024

NE-3, 28 NOV 2024 to 26 DEC 2024