

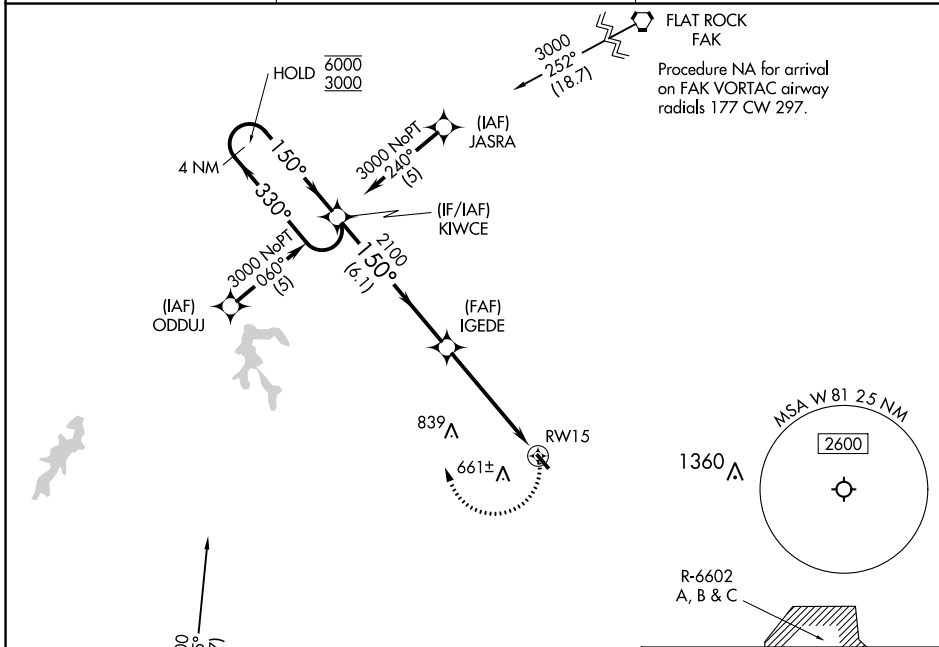
APP CRS	Rwy Idg	N/A
150°	TDZE	N/A
	Apt Elev	422

RNAV (GPS)-A

CREWE MUNI (W81)

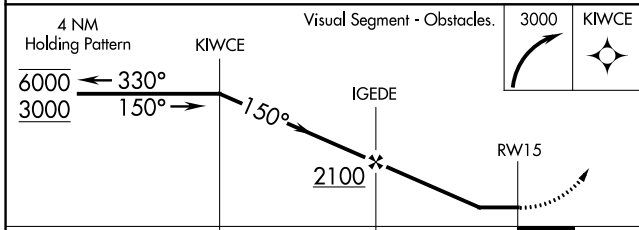
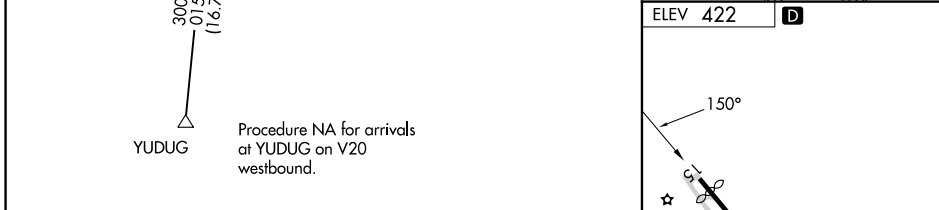
RNP APCH - GPS.	MISSED APPROACH: Climbing right turn to 3000 direct KIWCCE and hold.
<p>▼ Procedure NA at night.</p> <p>▲ Rwy 15 helicopter visibility reduction below 1 SM NA.</p>	

AWOS-3 119.05	WASHINGTON CENTER 118.75 377.1	UNICOM 122.8 (CTAF) ①
-------------------------	--	---------------------------------



NE-3, 28 NOV 2024 to 26 DEC 2024

NE-3, 28 NOV 2024 to 26 DEC 2024



CATEGORY	A	B	C	D
② CIRCLING	1420-3	998 (1000-3)		NA

ELEV 422 ③

MIRL Rwy 15-33 ④